

CCDC91 Antibody (C-term)

Affinity Purified Rabbit Polyclonal Antibody (Pab)

Catalog # AP17920b

Product Information

Application	WB, E
Primary Accession	Q7Z6B0
Other Accession	NP_060788.3
Reactivity	Human, Mouse
Host	Rabbit
Clonality	Polyclonal
Isotype	Rabbit IgG
Clone Names	RB37299
Calculated MW	49971
Antigen Region	322-350

Additional Information

Gene ID	55297
Other Names	Coiled-coil domain-containing protein 91, GGA-binding partner, p56 accessory protein, CCDC91, GGABP
Target/Specificity	This CCDC91 antibody is generated from rabbits immunized with a KLH conjugated synthetic peptide between 322-350 amino acids from the C-terminal region of human CCDC91.
Dilution	WB~~1:1000 E~~Use at an assay dependent concentration.
Format	Purified polyclonal antibody supplied in PBS with 0.09% (W/V) sodium azide. This antibody is purified through a protein A column, followed by peptide affinity purification.
Storage	Maintain refrigerated at 2-8°C for up to 2 weeks. For long term storage store at -20°C in small aliquots to prevent freeze-thaw cycles.
Precautions	CCDC91 Antibody (C-term) is for research use only and not for use in diagnostic or therapeutic procedures.

Protein Information

Name	CCDC91
Synonyms	GGABP
Function	Involved in the regulation of membrane traffic through the trans-Golgi

network (TGN). Functions in close cooperation with the GGAs in the sorting of hydrolases to lysosomes.

Cellular Location

Membrane; Peripheral membrane protein. Golgi apparatus, trans-Golgi network membrane; Peripheral membrane protein. Golgi apparatus, trans-Golgi network Note=Colocalizes with GGA1, GGA2 and GGA3

Tissue Location

Widely expressed..

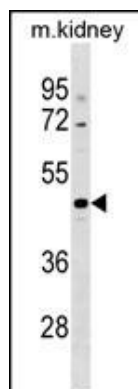
Background

CCDC91 is involved in the regulation of membrane traffic through the trans-Golgi network (TGN).

References

Rose, J. Phd, et al. Mol. Med. (2010) In press :
Mardones, G.A., et al. Mol. Biol. Cell 18(9):3486-3501(2007)
Collins, B.M., et al. Nat. Struct. Biol. 10(8):607-613(2003)
Lui, W.W., et al. Mol. Biol. Cell 14(6):2385-2398(2003)

Images



CCDC91 Antibody (C-term) (Cat. #AP17920b) western blot analysis in mouse kidney tissue lysates (35ug/lane). This demonstrates the CCDC91 antibody detected the CCDC91 protein (arrow).

Please note: All products are 'FOR RESEARCH USE ONLY. NOT FOR USE IN DIAGNOSTIC OR THERAPEUTIC PROCEDURES'.