

# PVRL4 Antibody (Center)

Affinity Purified Rabbit Polyclonal Antibody (Pab)

Catalog # AP17922c

## Product Information

---

Application	WB, E
Primary Accession	<a href="#">Q96NY8</a>
Other Accession	<a href="#">NP_112178.2</a>
Reactivity	Human
Host	Rabbit
Clonality	Polyclonal
Isotype	Rabbit IgG
Clone Names	RB37608
Calculated MW	55454
Antigen Region	239-266

## Additional Information

---

Gene ID	81607
Other Names	Nectin-4, Ig superfamily receptor LNIR, Poliovirus receptor-related protein 4, Processed poliovirus receptor-related protein 4, PVRL4, LNIR, PRR4
Target/Specificity	This PVRL4 antibody is generated from rabbits immunized with a KLH conjugated synthetic peptide between 239-266 amino acids from the Central region of human PVRL4.
Dilution	WB~~1:1000 E~~Use at an assay dependent concentration.
Format	Purified polyclonal antibody supplied in PBS with 0.09% (W/V) sodium azide. This antibody is purified through a protein A column, followed by peptide affinity purification.
Storage	Maintain refrigerated at 2-8°C for up to 2 weeks. For long term storage store at -20°C in small aliquots to prevent freeze-thaw cycles.
Precautions	PVRL4 Antibody (Center) is for research use only and not for use in diagnostic or therapeutic procedures.

## Protein Information

---

Name	NECTIN4 ( <a href="#">HGNC:19688</a> )
Synonyms	LNIR, PRR4, PVRL4
Function	Seems to be involved in cell adhesion through trans- homophilic and

-heterophilic interactions, the latter including specifically interactions with NECTIN1. Does not act as receptor for alpha-herpesvirus entry into cells.

**Cellular Location**

Cell membrane; Single-pass type I membrane protein. Cell junction, adherens junction. Note=Colocalizes with AFDN at cadherin- based adherens junctions (PubMed:11544254)

**Tissue Location**

Predominantly expressed in placenta. Not detected in normal breast epithelium but expressed in breast carcinoma

## Background

---

Poliovirus receptor-like proteins (PVRLs), such as PVRL4, are adhesion receptors of the immunoglobulin superfamily and function in cell-cell adhesion (Reymond et al., 2001 [PubMed 11544254]).

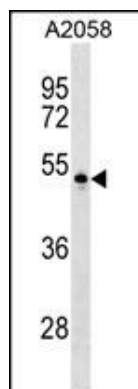
## References

---

Derycke, M.S., et al. Am. J. Clin. Pathol. 134(5):835-845(2010)  
Brancati, F., et al. Am. J. Hum. Genet. 87(2):265-273(2010)  
Takano, A., et al. Cancer Res. 69(16):6694-6703(2009)  
Fabre-Lafay, S., et al. BMC Cancer 7, 73 (2007) :  
Fabre-Lafay, S., et al. J. Biol. Chem. 280(20):19543-19550(2005)

## Images

---



PVRL4 Antibody (Center) (Cat. #AP17922c) western blot analysis in A2058 cell line lysates (35ug/lane). This demonstrates the PVRL4 antibody detected the PVRL4 protein (arrow).

Please note: All products are 'FOR RESEARCH USE ONLY. NOT FOR USE IN DIAGNOSTIC OR THERAPEUTIC PROCEDURES'.