

CERCAM Antibody (C-term)

Affinity Purified Rabbit Polyclonal Antibody (Pab)

Catalog # AP17925b

Product Information

Application	WB, E
Primary Accession	Q5T4B2
Other Accession	A7MB73 , NP_057258.3
Reactivity	Human
Predicted	Bovine
Host	Rabbit
Clonality	Polyclonal
Isotype	Rabbit IgG
Clone Names	RB37675
Calculated MW	67592
Antigen Region	492-519

Additional Information

Gene ID	51148
Other Names	Probable inactive glycosyltransferase 25 family member 3, Cerebral endothelial cell adhesion molecule, CERCAM, CEECAM1, GLT25D3, KIAA1502
Target/Specificity	This CERCAM antibody is generated from rabbits immunized with a KLH conjugated synthetic peptide between 492-519 amino acids from the C-terminal region of human CERCAM.
Dilution	WB~~1:1000 E~~Use at an assay dependent concentration.
Format	Purified polyclonal antibody supplied in PBS with 0.09% (W/V) sodium azide. This antibody is purified through a protein A column, followed by peptide affinity purification.
Storage	Maintain refrigerated at 2-8°C for up to 2 weeks. For long term storage store at -20°C in small aliquots to prevent freeze-thaw cycles.
Precautions	CERCAM Antibody (C-term) is for research use only and not for use in diagnostic or therapeutic procedures.

Protein Information

Name	CERCAM
Synonyms	CEECAM1, GLT25D3, KIAA1502

Function	Probable cell adhesion protein involved in leukocyte transmigration across the blood-brain barrier. Does not express any beta-galactosyltransferase activity in vitro.
Cellular Location	Endoplasmic reticulum lumen {ECO:0000255 PROSITE- ProRule:PRU10138}
Tissue Location	Ubiquitous. Highly expressed in secretory and nervous tissues.

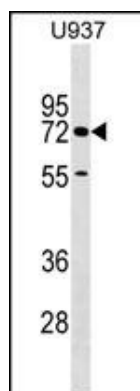
Background

Probable cell adhesion protein involved in leukocyte transmigration across the blood-brain barrier. Has apparently no beta-galactosyltransferase activity.

References

Starzyk, R.M., et al. J. Infect. Dis. 181(1):181-187(2000)

Images



CERCAM Antibody (C-term) (Cat. #AP17925b) western blot analysis in U937 cell line lysates (35ug/lane). This demonstrates the CERCAM antibody detected the CERCAM protein (arrow).

Please note: All products are 'FOR RESEARCH USE ONLY. NOT FOR USE IN DIAGNOSTIC OR THERAPEUTIC PROCEDURES'.