

# OR1M1 Antibody (C-term)

Affinity Purified Rabbit Polyclonal Antibody (Pab)

Catalog # AP17931b

## Product Information

---

Application	WB, E
Primary Accession	<a href="#">Q8NGA1</a>
Other Accession	<a href="#">NP_001004456.1</a>
Reactivity	Human
Host	Rabbit
Clonality	Polyclonal
Isotype	Rabbit IgG
Clone Names	RB37952
Calculated MW	34840
Antigen Region	280-308

## Additional Information

---

Gene ID	125963
Other Names	Olfactory receptor 1M1, Olfactory receptor 19-6, OR19-6, Olfactory receptor OR19-5, OR1M1
Target/Specificity	This OR1M1 antibody is generated from rabbits immunized with a KLH conjugated synthetic peptide between 280-308 amino acids from the C-terminal region of human OR1M1.
Dilution	WB~~1:1000 E~~Use at an assay dependent concentration.
Format	Purified polyclonal antibody supplied in PBS with 0.09% (W/V) sodium azide. This antibody is purified through a protein A column, followed by peptide affinity purification.
Storage	Maintain refrigerated at 2-8°C for up to 2 weeks. For long term storage store at -20°C in small aliquots to prevent freeze-thaw cycles.
Precautions	OR1M1 Antibody (C-term) is for research use only and not for use in diagnostic or therapeutic procedures.

## Protein Information

---

Name	OR1M1 ( <a href="#">HGNC:8220</a> )
Function	Odorant receptor.
Cellular Location	Cell membrane; Multi-pass membrane protein

## Background

---

Olfactory receptors interact with odorant molecules in the nose, to initiate a neuronal response that triggers the perception of a smell. The olfactory receptor proteins are members of a large family of G-protein-coupled receptors (GPCR) arising from single coding-exon genes. Olfactory receptors share a 7-transmembrane domain structure with many neurotransmitter and hormone receptors and are responsible for the recognition and G protein-mediated transduction of odorant signals. The olfactory receptor gene family is the largest in the genome. The nomenclature assigned to the olfactory receptor genes and proteins for this organism is independent of other organisms.

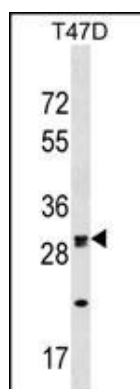
## References

---

Malnic, B., et al. Proc. Natl. Acad. Sci. U.S.A. 101(8):2584-2589(2004)  
Fuchs, T., et al. Genomics 80(3):295-302(2002)

## Images

---



OR1M1 Antibody (C-term) (Cat. #AP17931b) western blot analysis in T47D cell line lysates (35ug/lane). This demonstrates the OR1M1 antibody detected the OR1M1 protein (arrow).

Please note: All products are 'FOR RESEARCH USE ONLY. NOT FOR USE IN DIAGNOSTIC OR THERAPEUTIC PROCEDURES'.