

# STXBP6 Antibody (Center)

Affinity Purified Rabbit Polyclonal Antibody (Pab)

Catalog # AP17934c

## Product Information

---

Application	WB, E
Primary Accession	<a href="#">Q8NFX7</a>
Other Accession	<a href="#">NP_054897.4</a>
Reactivity	Human
Host	Rabbit
Clonality	Polyclonal
Isotype	Rabbit IgG
Clone Names	RB38006
Calculated MW	23554
Antigen Region	71-97

## Additional Information

---

Gene ID	29091
Other Names	Syntaxin-binding protein 6, Amisyn, STXBP6
Target/Specificity	This STXBP6 antibody is generated from rabbits immunized with a KLH conjugated synthetic peptide between 71-97 amino acids from the Central region of human STXBP6.
Dilution	WB~~1:1000 E~~Use at an assay dependent concentration.
Format	Purified polyclonal antibody supplied in PBS with 0.09% (W/V) sodium azide. This antibody is purified through a protein A column, followed by peptide affinity purification.
Storage	Maintain refrigerated at 2-8°C for up to 2 weeks. For long term storage store at -20°C in small aliquots to prevent freeze-thaw cycles.
Precautions	STXBP6 Antibody (Center) is for research use only and not for use in diagnostic or therapeutic procedures.

## Protein Information

---

Name	STXBP6
Function	Forms non-fusogenic complexes with SNAP25 and STX1A and may thereby modulate the formation of functional SNARE complexes and exocytosis.
Cellular Location	Cytoplasm. Membrane; Peripheral membrane protein

**Tissue Location**

Detected at low levels in brain, and at very low levels in heart, adrenal gland, testis, liver and kidney

**Background**

---

STXBP6 binds components of the SNARE complex (see MIM 603215) and may be involved in regulating SNARE complex formation (Scales et al., 2002 [PubMed 12145319]).

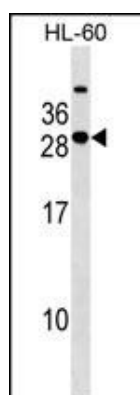
**References**

---

Rose, J. Phd, et al. Mol. Med. (2010) In press :  
Heilig, R., et al. Nature 421(6923):601-607(2003)  
Scales, S.J., et al. J. Biol. Chem. 277(31):28271-28279(2002)

**Images**

---



STXBP6 Antibody (Center) (Cat. #AP17934c) western blot analysis in HL-60 cell line lysates (35ug/lane). This demonstrates the STXBP6 antibody detected the STXBP6 protein (arrow).

Please note: All products are 'FOR RESEARCH USE ONLY. NOT FOR USE IN DIAGNOSTIC OR THERAPEUTIC PROCEDURES'.