

ACTL8 Antibody (Center)

Affinity Purified Rabbit Polyclonal Antibody (Pab)

Catalog # AP17953c

Product Information

Application	WB, E
Primary Accession	Q9H568
Other Accession	NP_110439.2
Reactivity	Human
Host	Rabbit
Clonality	Polyclonal
Isotype	Rabbit IgG
Clone Names	RB38144
Calculated MW	41360
Antigen Region	166-192

Additional Information

Gene ID	81569
Other Names	Actin-like protein 8, Cancer/testis antigen 57, CT57, ACTL8
Target/Specificity	This ACTL8 antibody is generated from rabbits immunized with a KLH conjugated synthetic peptide between 166-192 amino acids from the Central region of human ACTL8.
Dilution	WB~~1:1000 E~~Use at an assay dependent concentration.
Format	Purified polyclonal antibody supplied in PBS with 0.09% (W/V) sodium azide. This antibody is purified through a protein A column, followed by peptide affinity purification.
Storage	Maintain refrigerated at 2-8°C for up to 2 weeks. For long term storage store at -20°C in small aliquots to prevent freeze-thaw cycles.
Precautions	ACTL8 Antibody (Center) is for research use only and not for use in diagnostic or therapeutic procedures.

Protein Information

Name	ACTL8
Cellular Location	Cytoplasm, cytoskeleton.
Tissue Location	Strongly expressed in testis and pancreas. Weak expression in placenta.

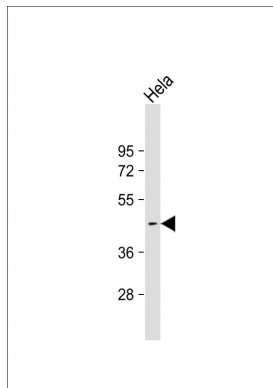
Background

Belongs to the actin family.

References

Ota, T., et al. Nat. Genet. 36(1):40-45(2004)

Images



Anti-ACTL8 Antibody (Center) at 1:1000 dilution + HeLa whole cell lysate Lysates/proteins at 20 µg per lane. Secondary Goat Anti-Rabbit IgG, (H+L), Peroxidase conjugated at 1/10000 dilution. Predicted band size : 41 kDa Blocking/Dilution buffer: 5% NFDM/TBST.

Please note: All products are 'FOR RESEARCH USE ONLY. NOT FOR USE IN DIAGNOSTIC OR THERAPEUTIC PROCEDURES'.