

CYorf15B Antibody (Center)

Affinity Purified Rabbit Polyclonal Antibody (Pab)

Catalog # AP17965c

Product Information

Application	WB, E
Primary Accession	Q9BZA4
Other Accession	NP_115965.1
Reactivity	Human
Host	Rabbit
Clonality	Polyclonal
Isotype	Rabbit IgG
Clone Names	RB38218
Antigen Region	60-86

Additional Information

Other Names	CYorf15B; Putative gamma-taxilin-like protein CYorf15B; Lipopolysaccharide-specific response 5-like protein
Target/Specificity	This CYorf15B antibody is generated from rabbits immunized with a KLH conjugated synthetic peptide between 60-86 amino acids from the Central region of human CYorf15B.
Dilution	WB~~1:1000 E~~Use at an assay dependent concentration.
Format	Purified polyclonal antibody supplied in PBS with 0.09% (W/V) sodium azide. This antibody is purified through a protein A column, followed by peptide affinity purification.
Storage	Maintain refrigerated at 2-8°C for up to 2 weeks. For long term storage store at -20°C in small aliquots to prevent freeze-thaw cycles.
Precautions	CYorf15B Antibody (Center) is for research use only and not for use in diagnostic or therapeutic procedures.

Protein Information

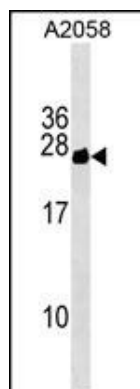
Background

The function of this protein remains unknown.

References

Kim, J.M., et al. DNA Res. 13(6):275-286(2006)
Skaletsky, H., et al. Nature 423(6942):825-837(2003)

Images



CYorf15B Antibody (Center) (Cat. #AP17965c) western blot analysis in A2058 cell line lysates (35ug/lane). This demonstrates the CYorf15B antibody detected the CYorf15B protein (arrow).

Please note: All products are 'FOR RESEARCH USE ONLY. NOT FOR USE IN DIAGNOSTIC OR THERAPEUTIC PROCEDURES'.