

GPR88 Antibody (C-term)

Affinity Purified Rabbit Polyclonal Antibody (Pab)
Catalog # AP17976b

Product Information

Application	WB, E
Primary Accession	Q9GZNO
Other Accession	Q9ESP4 , Q9EPB7 , NP_071332.2
Reactivity	Human, Rat, Mouse
Predicted	Mouse, Rat
Host	Rabbit
Clonality	Polyclonal
Isotype	Rabbit IgG
Clone Names	RB38264
Antigen Region	325-352

Additional Information

Other Names	Probable G-protein coupled receptor 88, Striatum-specific G-protein coupled receptor, GPR88, STRG
Target/Specificity	This GPR88 antibody is generated from rabbits immunized with a KLH conjugated synthetic peptide between 325-352 amino acids from the C-terminal region of human GPR88.
Dilution	WB~~1:1000 E~~Use at an assay dependent concentration.
Format	Purified polyclonal antibody supplied in PBS with 0.09% (W/V) sodium azide. This antibody is purified through a protein A column, followed by peptide affinity purification.
Storage	Maintain refrigerated at 2-8°C for up to 2 weeks. For long term storage store at -20°C in small aliquots to prevent freeze-thaw cycles.
Precautions	GPR88 Antibody (C-term) is for research use only and not for use in diagnostic or therapeutic procedures.

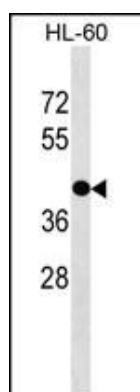
Protein Information

Background

GPR88 is an orphan receptor.

References

Images



GPR88 Antibody (C-term) (Cat. #AP17976b) western blot analysis in HL-60 cell line lysates (35ug/lane). This demonstrates the GPR88 antibody detected the GPR88 protein (arrow).

Please note: All products are 'FOR RESEARCH USE ONLY. NOT FOR USE IN DIAGNOSTIC OR THERAPEUTIC PROCEDURES'.