

Erythropoietin Antibody (C-term)

Purified Rabbit Polyclonal Antibody (Pab)

Catalog # AP17987b

Product Information

Application	WB, E
Primary Accession	P01588
Other Accession	P29676 , P07865 , NP_000790
Reactivity	Human
Predicted	Monkey, Rat
Host	Rabbit
Clonality	Polyclonal
Isotype	Rabbit IgG
Clone Names	RB19497
Calculated MW	21307
Antigen Region	155-184

Additional Information

Gene ID	2056
Other Names	Erythropoietin, Epoetin, EPO
Target/Specificity	This Erythropoietin antibody is generated from rabbits immunized with a KLH conjugated synthetic peptide between 155-184 amino acids from the C-terminal region of human Erythropoietin.
Dilution	WB~~1:1000 E~~Use at an assay dependent concentration.
Format	Purified polyclonal antibody supplied in PBS with 0.09% (W/V) sodium azide. This antibody is prepared by Saturated Ammonium Sulfate (SAS) precipitation followed by dialysis against PBS.
Storage	Maintain refrigerated at 2-8°C for up to 2 weeks. For long term storage store at -20°C in small aliquots to prevent freeze-thaw cycles.
Precautions	Erythropoietin Antibody (C-term) is for research use only and not for use in diagnostic or therapeutic procedures.

Protein Information

Name	EPO
Function	Hormone involved in the regulation of erythrocyte proliferation and differentiation and the maintenance of a physiological level of circulating erythrocyte mass (PubMed: 28283061). Binds to EPOR leading to EPOR

dimerization and JAK2 activation thereby activating specific downstream effectors, including STAT1 and STAT3 (PubMed:[9774108](#)).

Cellular Location

Secreted.

Tissue Location

Produced by kidney or liver of adult mammals and by liver of fetal or neonatal mammals.

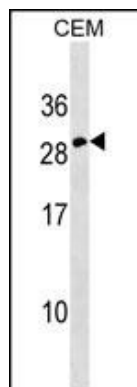
Background

This gene is a member of the EPO/TPO family and encodes a secreted, glycosylated cytokine composed of four alpha helical bundles. The protein is found in the plasma and regulates red cell production by promoting erythroid differentiation and initiating hemoglobin synthesis. This protein also has neuroprotective activity against a variety of potential brain injuries and antiapoptotic functions in several tissue types. [provided by RefSeq].

References

Bailey, S.D., et al. Diabetes Care 33(10):2250-2253(2010)
Kristensen, P.L., et al. Eur. J. Endocrinol. 163(3):391-398(2010)
Kim, M.H., et al. Mol. Biol. (Mosk.) 44(4):656-663(2010)
Carraway, M.S., et al. Circ. Res. 106(11):1722-1730(2010)
Shi, Z., et al. Mol. Cancer Res. 8(4):615-626(2010)

Images



Erythropoietin Antibody (C-term) (Cat. #AP17987b) western blot analysis in CEM cell line lysates (35ug/lane). This demonstrates the Erythropoietin antibody detected the Erythropoietin protein (arrow).

Please note: All products are 'FOR RESEARCH USE ONLY. NOT FOR USE IN DIAGNOSTIC OR THERAPEUTIC PROCEDURES'.