

LRRC42 Antibody (Center)

Affinity Purified Rabbit Polyclonal Antibody (Pab)

Catalog # AP17990c

Product Information

Application	WB, E
Primary Accession	Q9Y546
Other Accession	NP_443172.1
Reactivity	Human
Host	Rabbit
Clonality	Polyclonal
Isotype	Rabbit IgG
Clone Names	RB21290
Calculated MW	48571
Antigen Region	44-71

Additional Information

Gene ID	115353
Other Names	Leucine-rich repeat-containing protein 42, LRRC42
Target/Specificity	This LRRC42 antibody is generated from rabbits immunized with a KLH conjugated synthetic peptide between 44-71 amino acids from the Central region of human LRRC42.
Dilution	WB~~1:1000 E~~Use at an assay dependent concentration.
Format	Purified polyclonal antibody supplied in PBS with 0.09% (W/V) sodium azide. This antibody is purified through a protein A column, followed by peptide affinity purification.
Storage	Maintain refrigerated at 2-8°C for up to 2 weeks. For long term storage store at -20°C in small aliquots to prevent freeze-thaw cycles.
Precautions	LRRC42 Antibody (Center) is for research use only and not for use in diagnostic or therapeutic procedures.

Protein Information

Name	LRRC42
-------------	--------

Background

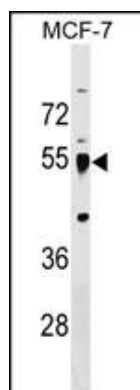
The specific function of this protein remains unknown. It contains 2 LRR (leucine-rich) repeats.

References

Matsuoka, S., et al. Science 316(5828):1160-1166(2007)

Lamesch, P., et al. Genomics 89(3):307-315(2007)

Images



LRRC42 Antibody (Center) (Cat. #AP17990c) western blot analysis in MCF-7 cell line lysates (35ug/lane). This demonstrates the LRRC42 antibody detected the LRRC42 protein (arrow).

Please note: All products are 'FOR RESEARCH USE ONLY. NOT FOR USE IN DIAGNOSTIC OR THERAPEUTIC PROCEDURES'.