

# FAM65C Antibody (C-term)

Affinity Purified Rabbit Polyclonal Antibody (Pab)

Catalog # AP18035b

## Product Information

---

Application	WB, E
Primary Accession	<a href="#">Q96MK2</a>
Other Accession	<a href="#">NP_543019.2</a>
Reactivity	Human
Host	Rabbit
Clonality	Polyclonal
Isotype	Rabbit IgG
Clone Names	RB28187
Calculated MW	105290
Antigen Region	700-729

## Additional Information

---

Gene ID	140876
Other Names	Protein FAM65C, FAM65C, C20orf175
Target/Specificity	This FAM65C antibody is generated from rabbits immunized with a KLH conjugated synthetic peptide between 700-729 amino acids from the C-terminal region of human FAM65C.
Dilution	WB~~1:1000 E~~Use at an assay dependent concentration.
Format	Purified polyclonal antibody supplied in PBS with 0.09% (W/V) sodium azide. This antibody is purified through a protein A column, followed by peptide affinity purification.
Storage	Maintain refrigerated at 2-8°C for up to 2 weeks. For long term storage store at -20°C in small aliquots to prevent freeze-thaw cycles.
Precautions	FAM65C Antibody (C-term) is for research use only and not for use in diagnostic or therapeutic procedures.

## Protein Information

---

Name	RIPOR3 ( <a href="#">HGNC:16168</a> )
------	---------------------------------------

## Background

---

The function of this protein remains unknown.

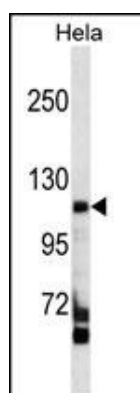
## References

---

Deloukas, P., et al. Nature 414(6866):865-871(2001)

## Images

---



FAM65C Antibody (C-term) (Cat. #AP18035b) western blot analysis in HeLa cell line lysates (35ug/lane). This demonstrates the FAM65C antibody detected the FAM65C protein (arrow).

Please note: All products are 'FOR RESEARCH USE ONLY. NOT FOR USE IN DIAGNOSTIC OR THERAPEUTIC PROCEDURES'.