

METTL7B Antibody (N-term)

Affinity Purified Rabbit Polyclonal Antibody (Pab)

Catalog # AP18067a

Product Information

Application	WB, E
Primary Accession	Q6UX53
Other Accession	Q562C4 , Q9DD20 , NP_689850.2
Reactivity	Human, Rat, Mouse
Predicted	Rat
Host	Rabbit
Clonality	Polyclonal
Isotype	Rabbit IgG
Clone Names	RB37715
Calculated MW	27775
Antigen Region	37-63

Additional Information

Gene ID	196410
Other Names	Methyltransferase-like protein 7B, 211-, METTL7B
Target/Specificity	This METTL7B antibody is generated from rabbits immunized with a KLH conjugated synthetic peptide between 37-63 amino acids from the N-terminal region of human METTL7B.
Dilution	WB~~1:1000 E~~Use at an assay dependent concentration.
Format	Purified polyclonal antibody supplied in PBS with 0.09% (W/V) sodium azide. This antibody is purified through a protein A column, followed by peptide affinity purification.
Storage	Maintain refrigerated at 2-8°C for up to 2 weeks. For long term storage store at -20°C in small aliquots to prevent freeze-thaw cycles.
Precautions	METTL7B Antibody (N-term) is for research use only and not for use in diagnostic or therapeutic procedures.

Protein Information

Name	TMT1B {ECO:0000303 PubMed:37137720, ECO:0000312 HGNC:HGNC:28276}
Function	Thiol S-methyltransferase that catalyzes the transfer of a methyl group from S-adenosyl-L-methionine to alkyl and phenolic thiol- containing acceptor

substrates. Together with TMT1B accounts for most of S-thiol methylation activity in the endoplasmic reticulum of hepatocytes. Selectively methylates S-centered nucleophiles from metabolites such as hydrogen sulfide and dithiothreitol.

Cellular Location

Endoplasmic reticulum membrane {ECO:0000250|UniProtKB:Q562C4}; Peripheral membrane protein {ECO:0000250|UniProtKB:Q562C4}. Lipid droplet {ECO:0000250|UniProtKB:Q562C4}. Microsome. Cytoplasm, cytosol. Note=Highly concentrated in the perinuclear area of the endoplasmic reticulum (ER) and surrounding lipid droplets. May be associated with the specific regions of the LR that form lipid droplets and targeted to the initial deposits of lipids where the lipid droplets form. {ECO:0000250|UniProtKB:Q562C4}

Tissue Location

Expressed in the liver.

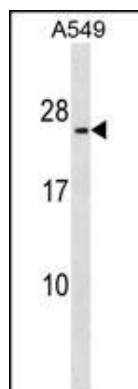
Background

METTL7B is probable methyltransferase (By similarity).

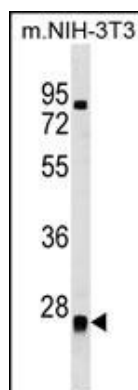
References

Clark, H.F., et al. Genome Res. 13(10):2265-2270(2003)

Images



METTL7B Antibody (N-term) (Cat. #AP18067a) western blot analysis in A549 cell line lysates (35ug/lane). This demonstrates the METTL7B antibody detected the METTL7B protein (arrow).



METTL7B Antibody (N-term) (Cat. #AP18067a) western blot analysis in mouse NIH-3T3 cell line lysates (35ug/lane). This demonstrates the METTL7B antibody detected the METTL7B protein (arrow).

Please note: All products are 'FOR RESEARCH USE ONLY. NOT FOR USE IN DIAGNOSTIC OR THERAPEUTIC PROCEDURES'.