

CRTAC1 Antibody (N-term)

Affinity Purified Rabbit Polyclonal Antibody (Pab)

Catalog # AP18087a

Product Information

Application	WB, E
Primary Accession	Q9NQ79
Other Accession	Q8R555 , NP_060528.3
Reactivity	Human
Predicted	Mouse
Host	Rabbit
Clonality	Polyclonal
Isotype	Rabbit IgG
Clone Names	RB38216
Calculated MW	71421
Antigen Region	130-156

Additional Information

Gene ID	55118
Other Names	Cartilage acidic protein 1, 68 kDa chondrocyte-expressed protein, CEP-68, ASPIC, CRTAC1, ASPIC1, CEP68
Target/Specificity	This CRTAC1 antibody is generated from rabbits immunized with a KLH conjugated synthetic peptide between 130-156 amino acids from the N-terminal region of human CRTAC1.
Dilution	WB~~1:1000 E~~Use at an assay dependent concentration.
Format	Purified polyclonal antibody supplied in PBS with 0.09% (W/V) sodium azide. This antibody is purified through a protein A column, followed by peptide affinity purification.
Storage	Maintain refrigerated at 2-8°C for up to 2 weeks. For long term storage store at -20°C in small aliquots to prevent freeze-thaw cycles.
Precautions	CRTAC1 Antibody (N-term) is for research use only and not for use in diagnostic or therapeutic procedures.

Protein Information

Name	CRTAC1
Synonyms	ASPIC1, CEP68

Cellular Location	Secreted, extracellular space, extracellular matrix
Tissue Location	Expressed in the interterritorial matrix of articular deep zone cartilage (at protein level). Isoform 1 and isoform 2 are expressed in brain. Isoform 1 is detected in lung and chondrocytes. Detected in cartilage, bone, cultured chondrocytes and lung, and at low levels in heart. Not detected in osteoblasts

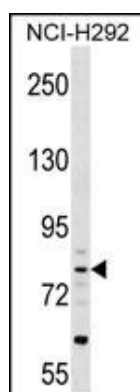
Background

The function of this protein remains unknown.

References

Sebastiani, P., et al. Science (2010) In press :
 Rose, J.E., et al. Mol. Med. 16 (7-8), 247-253 (2010) :
 Zabaneh, D., et al. PLoS ONE 5 (8), E11961 (2010) :
 Grgurevic, L., et al. Int Orthop 31(6):743-751(2007)
 Steck, E., et al. Matrix Biol. 26(1):30-41(2007)

Images



CRTAC1 Antibody (N-term) (Cat. #AP18087a) western blot analysis in NCI-H292 cell line lysates (35ug/lane). This demonstrates the CRTAC1 antibody detected the CRTAC1 protein (arrow).

Please note: All products are 'FOR RESEARCH USE ONLY. NOT FOR USE IN DIAGNOSTIC OR THERAPEUTIC PROCEDURES'.