

MTL5 Antibody (C-term)

Affinity Purified Rabbit Polyclonal Antibody (Pab)

Catalog # AP18102b

Product Information

Application	WB, E
Primary Accession	Q9Y4I5
Other Accession	NP_001034745.1
Reactivity	Human
Host	Rabbit
Clonality	Polyclonal
Isotype	Rabbit IgG
Clone Names	RB38308
Calculated MW	55025
Antigen Region	341-368

Additional Information

Gene ID	9633
Other Names	Tesmin, Metallothionein-like 5, testis-specific, Testis-specific metallothionein-like protein, MTL5
Target/Specificity	This MTL5 antibody is generated from rabbits immunized with a KLH conjugated synthetic peptide between 341-368 amino acids from the C-terminal region of human MTL5.
Dilution	WB~~1:1000 E~~Use at an assay dependent concentration.
Format	Purified polyclonal antibody supplied in PBS with 0.09% (W/V) sodium azide. This antibody is purified through a protein A column, followed by peptide affinity purification.
Storage	Maintain refrigerated at 2-8°C for up to 2 weeks. For long term storage store at -20°C in small aliquots to prevent freeze-thaw cycles.
Precautions	MTL5 Antibody (C-term) is for research use only and not for use in diagnostic or therapeutic procedures.

Protein Information

Name	TESMIN (HGNC:7446)
Synonyms	MTL5
Function	Essential for normal spermatogenesis and male fertility (By similarity).

Required for the completion of meiosis in male germ cells (By similarity).

Cellular Location

Cytoplasm {ECO:0000250|UniProtKB:Q9WTJ6}. Nucleus {ECO:0000250|UniProtKB:Q9WTJ6}. Note=Predominantly localized to the cytoplasm. Translocates from the cytoplasm to the nucleus in the G2/M transition upon treatment with cadmium, cobalt or zinc {ECO:0000250|UniProtKB:Q9WTJ6}

Tissue Location

Expressed specifically in testis.

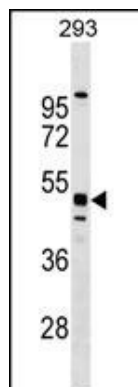
Background

Metallothionein proteins are highly conserved low-molecular-weight cysteine-rich proteins that are induced by and bind to heavy metal ions and have no enzymatic activity. They may play a central role in the regulation of cell growth and differentiation and are involved in spermatogenesis. This gene encodes a metallothionein-like protein which has been shown to be expressed differentially in mouse testis and ovary. Two transcript variants encoding different isoforms have been found for this gene.

References

Oh, J.H., et al. Mamm. Genome 16(12):942-954(2005)
Olesen, C., et al. Mol. Reprod. Dev. 67(1):116-126(2004)
Sutou, S., et al. Biol. Reprod. 68(5):1861-1869(2003)
Matsuura, T., et al. J. Inorg. Biochem. 88(2):183-191(2002)
Sugihara, T., et al. Genomics 57(1):130-136(1999)

Images



MTL5 Antibody (C-term) (Cat. #AP18102b) western blot analysis in 293 cell line lysates (35ug/lane). This demonstrates the MTL5 antibody detected the MTL5 protein (arrow).

Please note: All products are 'FOR RESEARCH USE ONLY. NOT FOR USE IN DIAGNOSTIC OR THERAPEUTIC PROCEDURES'.