

QPCTL Antibody (C-term)

Affinity Purified Rabbit Polyclonal Antibody (Pab)

Catalog # AP18106b

Product Information

Application	WB, E
Primary Accession	Q9NXS2
Other Accession	Q4R942 , NP_001156849.1
Reactivity	Human, Rat, Mouse
Predicted	Monkey
Host	Rabbit
Clonality	Polyclonal
Isotype	Rabbit IgG
Clone Names	RB38340
Calculated MW	42924
Antigen Region	271-297

Additional Information

Gene ID	54814
Other Names	Glutaminyl-peptide cyclotransferase-like protein, Golgi-resident glutaminyl-peptide cyclotransferase, isoQC, gQC, QPCTL
Target/Specificity	This QPCTL antibody is generated from rabbits immunized with a KLH conjugated synthetic peptide between 271-297 amino acids from the C-terminal region of human QPCTL.
Dilution	WB~~1:1000 E~~Use at an assay dependent concentration.
Format	Purified polyclonal antibody supplied in PBS with 0.09% (W/V) sodium azide. This antibody is purified through a protein A column, followed by peptide affinity purification.
Storage	Maintain refrigerated at 2-8°C for up to 2 weeks. For long term storage store at -20°C in small aliquots to prevent freeze-thaw cycles.
Precautions	QPCTL Antibody (C-term) is for research use only and not for use in diagnostic or therapeutic procedures.

Protein Information

Name	QPCTL
Function	Responsible for the biosynthesis of pyroglutamyl peptides.

Cellular Location

Golgi apparatus membrane; Single-pass type I membrane protein

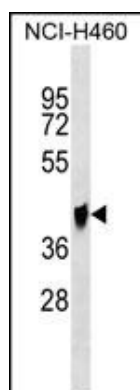
Background

QPCTL belongs to the glutaminyl-peptide cyclotransferase family. There are two named isoforms.

References

Ewing, R.M., et al. Mol. Syst. Biol. 3, 89 (2007) :

Images



QPCTL Antibody (C-term) (Cat. #AP18106b) western blot analysis in NCI-H460 cell line lysates (35ug/lane). This demonstrates the QPCTL antibody detected the QPCTL protein (arrow).

Please note: All products are 'FOR RESEARCH USE ONLY. NOT FOR USE IN DIAGNOSTIC OR THERAPEUTIC PROCEDURES'.