

# TPT1 Antibody (N-term)

Affinity Purified Rabbit Polyclonal Antibody (Pab)

Catalog # AP18116a

## Product Information

---

<b>Application</b>	WB, E
<b>Primary Accession</b>	<a href="#">P13693</a>
<b>Other Accession</b>	<a href="#">P61288</a> , <a href="#">NP_003286.1</a>
<b>Reactivity</b>	Human, Rat, Mouse
<b>Predicted</b>	Pig
<b>Host</b>	Rabbit
<b>Clonality</b>	Polyclonal
<b>Isotype</b>	Rabbit IgG
<b>Clone Names</b>	RB19909
<b>Calculated MW</b>	19595
<b>Antigen Region</b>	1-30

## Additional Information

---

<b>Gene ID</b>	7178
<b>Other Names</b>	Translationally-controlled tumor protein, TCTP, Fortilin, Histamine-releasing factor, HRF, p23, TPT1
<b>Target/Specificity</b>	This TPT1 antibody is generated from rabbits immunized with a KLH conjugated synthetic peptide between 1-30 amino acids from the N-terminal region of human TPT1.
<b>Dilution</b>	WB~~1:1000 E~~Use at an assay dependent concentration.
<b>Format</b>	Purified polyclonal antibody supplied in PBS with 0.09% (W/V) sodium azide. This antibody is purified through a protein A column, followed by peptide affinity purification.
<b>Storage</b>	Maintain refrigerated at 2-8°C for up to 2 weeks. For long term storage store at -20°C in small aliquots to prevent freeze-thaw cycles.
<b>Precautions</b>	TPT1 Antibody (N-term) is for research use only and not for use in diagnostic or therapeutic procedures.

## Protein Information

---

<b>Name</b>	TPT1
<b>Function</b>	Involved in calcium binding and microtubule stabilization (PubMed: <a href="#">12167714</a> , PubMed: <a href="#">15162379</a> , PubMed: <a href="#">15958728</a> ). Acts as a

negative regulator of TSC22D1-mediated apoptosis, via interaction with and destabilization of TSC22D1 protein (PubMed:[18325344](#)).

**Cellular Location**

Cytoplasm.

**Tissue Location**

Found in several healthy and tumoral cells including erythrocytes, hepatocytes, macrophages, platelets, keratinocytes, erythroleukemia cells, gliomas, melanomas, hepatoblastomas, and lymphomas. It cannot be detected in kidney and renal cell carcinoma (RCC). Expressed in placenta and prostate

## Background

---

TPT1 is involved in calcium binding and microtubule stabilization.

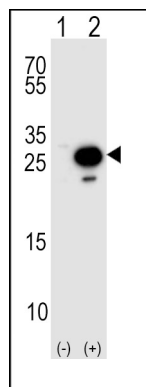
## References

---

Davila, S., et al. Genes Immun. 11(3):232-238(2010)  
Rid, R., et al. J. Steroid Biochem. Mol. Biol. 118 (1-2), 29-40 (2010) :  
Ma, Q., et al. J. Proteome Res. 9(1):40-49(2010)  
Dong, X., et al. J. Biol. Chem. 284(35):23754-23764(2009)  
Wu, P.S., et al. J. Immunol. 183(4):2373-2381(2009)

## Images

---



Western blot analysis of TPT1 Antibody (N-term) (arrow) using rabbit polyclonal TPT1 Antibody (N-term) (Cat. #AP18116a). 293 cell lysates (2 ug/lane) either nontransfected (Lane 1) or transiently transfected (Lane 2) with the TPT1 gene. A goat anti-rabbit IgG H&L(HRP) at 1:5000 dilution was used as the secondary antibody.

Please note: All products are 'FOR RESEARCH USE ONLY. NOT FOR USE IN DIAGNOSTIC OR THERAPEUTIC PROCEDURES'.