

CCR4 Antibody (C-term)

Affinity Purified Rabbit Polyclonal Antibody (Pab)

Catalog # AP18134b

Product Information

Application	WB, E
Primary Accession	P51679
Other Accession	NP_005499.1
Reactivity	Human
Host	Rabbit
Clonality	Polyclonal
Isotype	Rabbit IgG
Clone Names	RB22223
Calculated MW	41403
Antigen Region	262-290

Additional Information

Gene ID	1233
Other Names	C-C chemokine receptor type 4, C-C CKR-4, CC-CKR-4, CCR-4, CCR4, K5-5, CD194, CCR4, CMKBR4
Target/Specificity	This CCR4 antibody is generated from rabbits immunized with a KLH conjugated synthetic peptide between 262-290 amino acids from the C-terminal region of human CCR4.
Dilution	WB~~1:1000 E~~Use at an assay dependent concentration.
Format	Purified polyclonal antibody supplied in PBS with 0.09% (W/V) sodium azide. This antibody is purified through a protein A column, followed by peptide affinity purification.
Storage	Maintain refrigerated at 2-8°C for up to 2 weeks. For long term storage store at -20°C in small aliquots to prevent freeze-thaw cycles.
Precautions	CCR4 Antibody (C-term) is for research use only and not for use in diagnostic or therapeutic procedures.

Protein Information

Name	CCR4
Synonyms	CMKBR4
Function	High affinity receptor for the C-C type chemokines CCL17/TARC, CCL22/MDC

and CKLF isoform 1/CKLF1. The activity of this receptor is mediated by G(i) proteins which activate a phosphatidylinositol-calcium second messenger system. Can function as a chemoattractant homing receptor on circulating memory lymphocytes and as a coreceptor for some primary HIV-2 isolates. In the CNS, could mediate hippocampal-neuron survival.

Cellular Location

Cell membrane; Multi-pass membrane protein.

Tissue Location

Predominantly expressed in the thymus, in peripheral blood leukocytes, including T-cells, mostly CD4+ cells, and basophils, and in platelets; at lower levels, in the spleen and in monocytes (PubMed:10754297, PubMed:9169480). Detected also in macrophages, IL-2-activated natural killer cells and skin-homing memory T-cells, mostly the ones expressing the cutaneous lymphocyte antigen (CLA). Expressed in brain microvascular and coronary artery endothelial cells (PubMed:10754297).

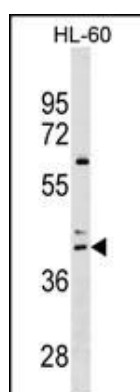
Background

The protein encoded by this gene belongs to the G-protein-coupled receptor family . It is a receptor for the CC chemokine - MIP-1, RANTES, TARC and MCP-1. Chemokines are a group of small polypeptide, structurally related molecules that regulate cell trafficking of various types of leukocytes. The chemokines also play fundamental roles in the development, homeostasis, and function of the immune system, and they have effects on cells of the central nervous system as well as on endothelial cells involved in angiogenesis or angiostasis.

References

Bailey, S.D., et al. Diabetes Care 33(10):2250-2253(2010)
Han, S., et al. Hum. Immunol. 71(7):727-730(2010)
Rajaraman, P., et al. Cancer Epidemiol. Biomarkers Prev. 19(5):1356-1361(2010)
Klapa, S., et al. Clin. Exp. Rheumatol. 28 (1 SUPPL 57), 72-80 (2010) :
Maneechotesuwan, K., et al. J Med Assoc Thai 93 SUPPL 1, S62-S70 (2010) :

Images



CCR4 Antibody (C-term) (Cat. #AP18134b) western blot analysis in HL-60 cell line lysates (35ug/lane). This demonstrates the CCR4 antibody detected the CCR4 protein (arrow).

Please note: All products are 'FOR RESEARCH USE ONLY. NOT FOR USE IN DIAGNOSTIC OR THERAPEUTIC PROCEDURES'.