

MDH2 Antibody (C-term)

Affinity Purified Rabbit Polyclonal Antibody (Pab)

Catalog # AP18138b

Product Information

Application	WB, E
Primary Accession	P40926
Other Accession	Q4R568 , NP_005909.2
Reactivity	Human, Rat, Mouse
Predicted	Monkey
Host	Rabbit
Clonality	Polyclonal
Isotype	Rabbit IgG
Clone Names	RB22957
Calculated MW	35503
Antigen Region	297-326

Additional Information

Gene ID	4191
Other Names	Malate dehydrogenase, mitochondrial, MDH2
Target/Specificity	This MDH2 antibody is generated from rabbits immunized with a KLH conjugated synthetic peptide between 297-326 amino acids from the C-terminal region of human MDH2.
Dilution	WB~~1:1000 E~~Use at an assay dependent concentration.
Format	Purified polyclonal antibody supplied in PBS with 0.09% (W/V) sodium azide. This antibody is purified through a protein A column, followed by peptide affinity purification.
Storage	Maintain refrigerated at 2-8°C for up to 2 weeks. For long term storage store at -20°C in small aliquots to prevent freeze-thaw cycles.
Precautions	MDH2 Antibody (C-term) is for research use only and not for use in diagnostic or therapeutic procedures.

Protein Information

Name	MDH2
Cellular Location	Mitochondrion matrix {ECO:0000250 UniProtKB:P04636}

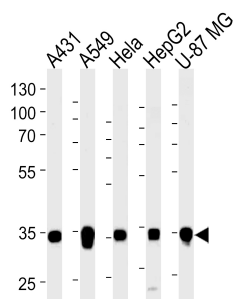
Background

Malate dehydrogenase catalyzes the reversible oxidation of malate to oxaloacetate, utilizing the NAD/NADH cofactor system in the citric acid cycle. The protein encoded by this gene is localized to the mitochondria and may play pivotal roles in the malate-aspartate shuttle that operates in the metabolic coordination between cytosol and mitochondria. [provided by RefSeq].

References

Rose, J. Phd, et al. Mol. Med. (2010) In press :
Rzem, R., et al. J. Inherit. Metab. Dis. 30(5):681-689(2007)
Luo, C., et al. J. Biochem. Biophys. Methods 68(2):101-111(2006)
Kullberg, M., et al. Mol. Biol. Evol. 23(8):1493-1503(2006)
Andersen, J.S., et al. Nature 433(7021):77-83(2005)

Images



Western blot analysis of lysates from A431, A549, HeLa, HepG2, U-87 MG cell line (from left to right), using MDH2 Antibody (C-term)(Cat. #AP18138b). AP18138b was diluted at 1:1000 at each lane. A goat anti-rabbit IgG H&L(HRP) at 1:5000 dilution was used as the secondary antibody. Lysates at 35ug per lane.

Please note: All products are 'FOR RESEARCH USE ONLY. NOT FOR USE IN DIAGNOSTIC OR THERAPEUTIC PROCEDURES'.