

TIPRL Antibody (C-term)

Affinity Purified Rabbit Polyclonal Antibody (Pab)

Catalog # AP18140b

Product Information

Application	WB, E
Primary Accession	O75663
Other Accession	A2VCX1 , Q8BH58 , NP_001026970.1
Reactivity	Human
Predicted	Mouse, Rat
Host	Rabbit
Clonality	Polyclonal
Isotype	Rabbit IgG
Clone Names	RB23370
Calculated MW	31444
Antigen Region	189-218

Additional Information

Gene ID	261726
Other Names	TIP41-like protein, Putative MAPK-activating protein PM10, Type 2A-interacting protein, TIP, TIPRL
Target/Specificity	This TIPRL antibody is generated from rabbits immunized with a KLH conjugated synthetic peptide between 189-218 amino acids from the C-terminal region of human TIPRL.
Dilution	WB~~1:1000 E~~Use at an assay dependent concentration.
Format	Purified polyclonal antibody supplied in PBS with 0.09% (W/V) sodium azide. This antibody is purified through a protein A column, followed by peptide affinity purification.
Storage	Maintain refrigerated at 2-8°C for up to 2 weeks. For long term storage store at -20°C in small aliquots to prevent freeze-thaw cycles.
Precautions	TIPRL Antibody (C-term) is for research use only and not for use in diagnostic or therapeutic procedures.

Protein Information

Name	TIPRL
Function	May be a allosteric regulator of serine/threonine-protein phosphatase 2A (PP2A). Isoform 1 inhibits catalytic activity of the PP2A(D) core complex in

vitro. The PP2A(C):TIPRL complex does not show phosphatase activity. Acts as a negative regulator of serine/threonine- protein phosphatase 4 probably by inhibiting the formation of the active PPP4C:PPP4R2 complex; the function is proposed to implicate it in DNA damage response by promoting H2AX phosphorylated on Ser-140 (gamma-H2AX). May play a role in the regulation of ATM/ATR signaling pathway controlling DNA replication and repair.

Cellular Location Cytoplasm.

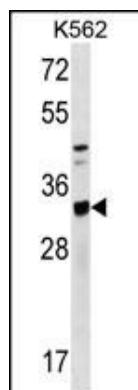
Background

TIPRL is an inhibitory regulator of protein phosphatase-2A (PP2A) (see PPP2CA; MIM 176915), PP4 (see PPP4C; MIM 602035), and PP6 (see PPP6C; MIM 612725) (McConnell et al., 2007 [PubMed 17384681]).

References

Ehret, G.B., et al. Eur. J. Hum. Genet. 17(12):1650-1657(2009)
Cheung, C.L., et al. Hum. Mol. Genet. 18(4):679-687(2009)
Rikova, K., et al. Cell 131(6):1190-1203(2007)
McConnell, J.L., et al. Oncogene 26(41):6021-6030(2007)
Ewing, R.M., et al. Mol. Syst. Biol. 3, 89 (2007) :

Images



TIPRL Antibody (C-term) (Cat. #AP18140b) western blot analysis in K562 cell line lysates (35ug/lane). This demonstrates the TIPRL antibody detected the TIPRL protein (arrow).

Please note: All products are 'FOR RESEARCH USE ONLY. NOT FOR USE IN DIAGNOSTIC OR THERAPEUTIC PROCEDURES'.