

# FASTKD3 Antibody (C-term)

Affinity Purified Rabbit Polyclonal Antibody (Pab)

Catalog # AP18144b

## Product Information

---

Application	WB, E
Primary Accession	<a href="#">Q14CZ7</a>
Other Accession	<a href="#">NP_076996.2</a>
Reactivity	Human
Host	Rabbit
Clonality	Polyclonal
Isotype	Rabbit IgG
Clone Names	RB24011
Calculated MW	75689
Antigen Region	623-650

## Additional Information

---

Gene ID	79072
Other Names	FAST kinase domain-containing protein 3, FASTKD3
Target/Specificity	This FASTKD3 antibody is generated from rabbits immunized with a KLH conjugated synthetic peptide between 623-650 amino acids from the C-terminal region of human FASTKD3.
Dilution	WB~~1:1000 E~~Use at an assay dependent concentration.
Format	Purified polyclonal antibody supplied in PBS with 0.09% (W/V) sodium azide. This antibody is purified through a protein A column, followed by peptide affinity purification.
Storage	Maintain refrigerated at 2-8°C for up to 2 weeks. For long term storage store at -20°C in small aliquots to prevent freeze-thaw cycles.
Precautions	FASTKD3 Antibody (C-term) is for research use only and not for use in diagnostic or therapeutic procedures.

## Protein Information

---

Name	FASTKD3
Function	Required for normal mitochondrial respiration (PubMed: <a href="#">20869947</a> ). Increases steady-state levels and half-lives of a subset of mature mitochondrial mRNAs MT-ND2, MT-ND3, MT-CYTB, MT-CO2, and MT-ATP8/6. Promotes MT-CO1 mRNA translation and increases mitochondrial complex IV

assembly and activity (PubMed:[27789713](#)).

**Cellular Location**

Mitochondrion

**Tissue Location**

Expression detected in spleen, thymus, testis, ovary, colon, heart, smooth muscle, kidney, brain, lung, liver and white adipose tissue with highest expression in liver and thyroid

## Background

---

The function of this protein remains unknown.

## References

---

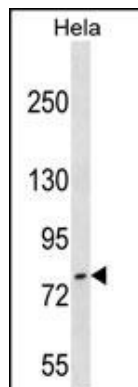
Simarro, M., et al. Biochem. Biophys. Res. Commun. 401(3):440-446(2010)

Bailey, S.D., et al. Diabetes Care 33(10):2250-2253(2010)

Talmud, P.J., et al. Am. J. Hum. Genet. 85(5):628-642(2009)

## Images

---



FASTKD3 Antibody (C-term) (Cat. #AP18144b) western blot analysis in HeLa cell line lysates (35ug/lane). This demonstrates the FASTKD3 antibody detected the FASTKD3 protein (arrow).

Please note: All products are 'FOR RESEARCH USE ONLY. NOT FOR USE IN DIAGNOSTIC OR THERAPEUTIC PROCEDURES'.