

SLN13 Antibody (C-term)

Affinity Purified Rabbit Polyclonal Antibody (Pab)

Catalog # AP18165b

Product Information

Application	WB, E
Primary Accession	Q68D06
Other Accession	NP_653283.3
Reactivity	Human
Host	Rabbit
Clonality	Polyclonal
Isotype	Rabbit IgG
Clone Names	RB25627
Calculated MW	102045
Antigen Region	632-663

Additional Information

Gene ID	146857
Other Names	Schlafen family member 13, SLFN13
Target/Specificity	This SLN13 antibody is generated from rabbits immunized with a KLH conjugated synthetic peptide between 632-663 amino acids from the C-terminal region of human SLN13.
Dilution	WB~~1:1000 E~~Use at an assay dependent concentration.
Format	Purified polyclonal antibody supplied in PBS with 0.09% (W/V) sodium azide. This antibody is purified through a protein A column, followed by peptide affinity purification.
Storage	Maintain refrigerated at 2-8°C for up to 2 weeks. For long term storage store at -20°C in small aliquots to prevent freeze-thaw cycles.
Precautions	SLN13 Antibody (C-term) is for research use only and not for use in diagnostic or therapeutic procedures.

Protein Information

Name	SLFN13 (HGNC:26481)
Function	Endoribonuclease that cleaves tRNAs and rRNAs (PubMed: 29563550). Cleaves tRNAs 11 nucleotides from the 3'-terminus at the acceptor stem (PubMed: 29563550). Does not act on tRNA(Sec) (PubMed: 29563550). Able to restrict HIV-1 virus replication; ability to inhibit HIV-1 replication is dependent

on endoribonuclease activity (PubMed:[29563550](#)).

Cellular Location Cytoplasm.

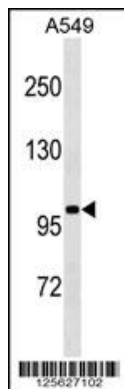
Background

SLFN13 belongs to the Schlafen family.

References

Schwarz, D.A., et al. Immunity 9(5):657-668(1998)

Images



SLN13 Antibody (C-term) (Cat. #AP18165b) western blot analysis in A549 cell line lysates (35ug/lane). This demonstrates the SLN13 antibody detected the SLN13 protein (arrow).

Please note: All products are 'FOR RESEARCH USE ONLY. NOT FOR USE IN DIAGNOSTIC OR THERAPEUTIC PROCEDURES'.