

PYRD2 Antibody (N-term)

Affinity Purified Rabbit Polyclonal Antibody (Pab)

Catalog # AP18172a

Product Information

Application	WB, E
Primary Accession	Q8N2H3
Other Accession	NP_116098.2
Reactivity	Human
Host	Rabbit
Clonality	Polyclonal
Isotype	Rabbit IgG
Clone Names	RB26391
Calculated MW	63068
Antigen Region	6-34

Additional Information

Gene ID	84795
Other Names	Pyridine nucleotide-disulfide oxidoreductase domain-containing protein 2, 1---, PYROXD2, C10orf33
Target/Specificity	This PYRD2 antibody is generated from rabbits immunized with a KLH conjugated synthetic peptide between 6-34 amino acids from the N-terminal region of human PYRD2.
Dilution	WB~~1:1000 E~~Use at an assay dependent concentration.
Format	Purified polyclonal antibody supplied in PBS with 0.09% (W/V) sodium azide. This antibody is purified through a protein A column, followed by peptide affinity purification.
Storage	Maintain refrigerated at 2-8°C for up to 2 weeks. For long term storage store at -20°C in small aliquots to prevent freeze-thaw cycles.
Precautions	PYRD2 Antibody (N-term) is for research use only and not for use in diagnostic or therapeutic procedures.

Protein Information

Name	PYROXD2 (HGNC:23517)
Synonyms	C10orf33
Function	Probable oxidoreductase that may play a role as regulator of mitochondrial

function.

Cellular Location

Mitochondrion matrix. Note=The import into mitochondria is dependent on TOMM40 and TIMM23.

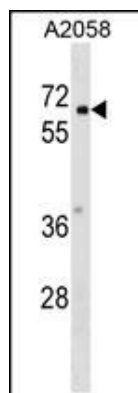
Background

PYROXD2 is probable oxidoreductase (By similarity).

References

Grupe, A., et al. Am. J. Hum. Genet. 78(1):78-88(2006)
Deloukas, P., et al. Nature 429(6990):375-381(2004)

Images



PYRD2 Antibody (N-term) (Cat. #AP18172a) western blot analysis in A2058 cell line lysates (35ug/lane). This demonstrates the PYRD2 antibody detected the PYRD2 protein (arrow).

Please note: All products are 'FOR RESEARCH USE ONLY. NOT FOR USE IN DIAGNOSTIC OR THERAPEUTIC PROCEDURES'.