

TFG Antibody (Center)

Affinity Purified Rabbit Polyclonal Antibody (Pab)

Catalog # AP18173c

Product Information

Application	WB, E
Primary Accession	Q92734
Other Accession	NP_001007566.1
Reactivity	Human
Host	Rabbit
Clonality	Polyclonal
Isotype	Rabbit IgG
Clone Names	RB26422
Calculated MW	43448
Antigen Region	85-114

Additional Information

Gene ID	10342
Other Names	Protein TFG, TRK-fused gene protein, TFG
Target/Specificity	This TFG antibody is generated from rabbits immunized with a KLH conjugated synthetic peptide between 85-114 amino acids from the Central region of human TFG.
Dilution	WB~~1:1000 E~~Use at an assay dependent concentration.
Format	Purified polyclonal antibody supplied in PBS with 0.09% (W/V) sodium azide. This antibody is purified through a protein A column, followed by peptide affinity purification.
Storage	Maintain refrigerated at 2-8°C for up to 2 weeks. For long term storage store at -20°C in small aliquots to prevent freeze-thaw cycles.
Precautions	TFG Antibody (Center) is for research use only and not for use in diagnostic or therapeutic procedures.

Protein Information

Name	TFG
Function	Plays a role in the normal dynamic function of the endoplasmic reticulum (ER) and its associated microtubules (PubMed: 23479643 , PubMed: 27813252). Required for secretory cargo traffic from the endoplasmic reticulum to the Golgi apparatus (PubMed: 21478858).

Cellular Location	Endoplasmic reticulum. Note=Localizes to endoplasmic reticulum exit site (ERES), also known as transitional endoplasmic reticulum (tER) (PubMed:21478858, PubMed:27813252).
Tissue Location	Ubiquitous.

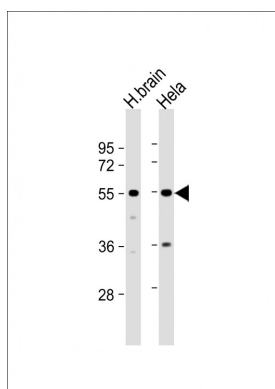
Background

There are several documented fusion oncoproteins encoded partially by this gene. This gene also participates in several oncogenic rearrangements resulting in anaplastic lymphoma and mixoid chondrosarcoma, and may play a role in the NF-kappaB pathway. Multiple transcript variants have been found for this gene.

References

Miranda, C., et al. J. Cell. Physiol. 208(1):154-160(2006)
Roccato, E., et al. J. Biol. Chem. 280(5):3382-3389(2005)
Hisaoaka, M., et al. Genes Chromosomes Cancer 40(4):325-328(2004)
Roccato, E., et al. Br. J. Cancer 87(6):645-653(2002)
Hernandez, L., et al. Am. J. Pathol. 160(4):1487-1494(2002)

Images



All lanes : Anti-TFG Antibody (Center) at 1:1000 dilution
Lane 1: human brain lysate Lane 2: HeLa whole cell lysate
Lysates/proteins at 20 µg per lane. Secondary Goat Anti-Rabbit IgG, (H+L), Peroxidase conjugated at 1/10000 dilution. Predicted band size : 43 kDa Blocking/Dilution buffer: 5% NFDM/TBST.

Please note: All products are 'FOR RESEARCH USE ONLY. NOT FOR USE IN DIAGNOSTIC OR THERAPEUTIC PROCEDURES'.