

# PCMTD1 Antibody (N-term)

Affinity Purified Rabbit Polyclonal Antibody (Pab)

Catalog # AP18176a

## Product Information

---

<b>Application</b>	WB, E
<b>Primary Accession</b>	<a href="#">Q96MG8</a>
<b>Other Accession</b>	<a href="#">P59913</a> , <a href="#">Q5ZMR3</a> , <a href="#">A2VDP2</a> , <a href="#">NP_443169.2</a>
<b>Reactivity</b>	Human, Mouse
<b>Predicted</b>	Bovine, Chicken
<b>Host</b>	Rabbit
<b>Clonality</b>	Polyclonal
<b>Isotype</b>	Rabbit IgG
<b>Clone Names</b>	RB26575
<b>Calculated MW</b>	40675
<b>Antigen Region</b>	19-48

## Additional Information

---

<b>Gene ID</b>	115294
<b>Other Names</b>	Protein-L-isoaspartate O-methyltransferase domain-containing protein 1, PCMTD1
<b>Target/Specificity</b>	This PCMTD1 antibody is generated from rabbits immunized with a KLH conjugated synthetic peptide between 19-48 amino acids from the N-terminal region of human PCMTD1.
<b>Dilution</b>	WB~~1:1000 E~~Use at an assay dependent concentration.
<b>Format</b>	Purified polyclonal antibody supplied in PBS with 0.09% (W/V) sodium azide. This antibody is purified through a protein A column, followed by peptide affinity purification.
<b>Storage</b>	Maintain refrigerated at 2-8°C for up to 2 weeks. For long term storage store at -20°C in small aliquots to prevent freeze-thaw cycles.
<b>Precautions</b>	PCMTD1 Antibody (N-term) is for research use only and not for use in diagnostic or therapeutic procedures.

## Protein Information

---

<b>Name</b>	PCMTD1 ( <a href="#">HGNC:30483</a> )
<b>Function</b>	Substrate recognition component of an ECS (Elongin BC-CUL5- SOCS-box protein) E3 ubiquitin ligase complex which mediates the ubiquitination and

subsequent proteasomal degradation of target proteins (PubMed:[35486881](#)). Specifically binds to the methyltransferase cofactor S-adenosylmethionine (AdoMet) via the N-terminal AdoMet binding motif, but does not display methyltransferase activity (PubMed:[35486881](#)). May provide an alternate maintenance pathway for modified proteins by acting as a damage-specific E3 ubiquitin ligase adaptor protein (PubMed:[35486881](#)).

#### Cellular Location

Cytoplasm {ECO:0000250|UniProtKB:P22061}. Membrane; Lipid-anchor

## Background

---

PCMTD1 belongs to the methyltransferase superfamily. L-isoaspartyl/D-aspartyl protein methyltransferase family.

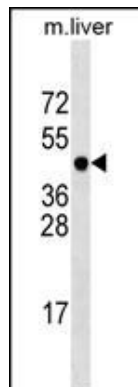
## References

---

Rose, J. Phd, et al. Mol. Med. (2010) In press :

## Images

---



PCMTD1 Antibody (N-term) (Cat. #AP18176a) western blot analysis in mouse liver tissue lysates (35ug/lane). This demonstrates the PCMTD1 antibody detected the PCMTD1 protein (arrow).

Please note: All products are 'FOR RESEARCH USE ONLY. NOT FOR USE IN DIAGNOSTIC OR THERAPEUTIC PROCEDURES'.