

MS4A14 Antibody (C-term)

Affinity Purified Rabbit Polyclonal Antibody (Pab)

Catalog # AP18177b

Product Information

Application	WB, E
Primary Accession	Q96JA4
Other Accession	NP_001073160.1
Reactivity	Human
Host	Rabbit
Clonality	Polyclonal
Isotype	Rabbit IgG
Clone Names	RB26700
Calculated MW	76580
Antigen Region	556-585

Additional Information

Gene ID	84689
Other Names	Membrane-spanning 4-domains subfamily A member 14, Testis development protein NYD-SP21, MS4A14, MS4A13, MS4A16
Target/Specificity	This MS4A14 antibody is generated from rabbits immunized with a KLH conjugated synthetic peptide between 556-585 amino acids from the C-terminal region of human MS4A14.
Dilution	WB~~1:1000 E~~Use at an assay dependent concentration.
Format	Purified polyclonal antibody supplied in PBS with 0.09% (W/V) sodium azide. This antibody is purified through a protein A column, followed by peptide affinity purification.
Storage	Maintain refrigerated at 2-8°C for up to 2 weeks. For long term storage store at -20°C in small aliquots to prevent freeze-thaw cycles.
Precautions	MS4A14 Antibody (C-term) is for research use only and not for use in diagnostic or therapeutic procedures.

Protein Information

Name	MS4A14
Synonyms	MS4A13, MS4A16
Function	May be involved in signal transduction as a component of a multimeric

receptor complex.

Cellular Location

Membrane; Multi-pass membrane protein

Background

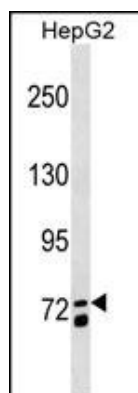
MS4A14 may be involved in signal transduction as a component of a multimeric receptor complex (By similarity).

References

Davila, S., et al. Genes Immun. 11(3):232-238(2010)

Kim, B.Y., et al. J. Biol. Chem. 276(31):29393-29402(2001)

Images



MS4A14 Antibody (C-term) (Cat. #AP18177b) western blot analysis in HepG2 cell line lysates (35ug/lane). This demonstrates the MS4A14 antibody detected the MS4A14 protein (arrow).

Please note: All products are 'FOR RESEARCH USE ONLY. NOT FOR USE IN DIAGNOSTIC OR THERAPEUTIC PROCEDURES'.