

# Beclin 1 Antibody

Purified Rabbit Polyclonal Antibody (Pab)

Catalog # AP1818b

## Product Information

---

<b>Application</b>	WB, IHC-P, FC, E
<b>Primary Accession</b>	<a href="#">Q14457</a>
<b>Other Accession</b>	<a href="#">Q91XJ1</a> , <a href="#">Q4A1L5</a> , <a href="#">Q88597</a> , <a href="#">Q4A1L4</a>
<b>Reactivity</b>	Human, Mouse
<b>Predicted</b>	Rat, Pig, Bovine
<b>Host</b>	Rabbit
<b>Clonality</b>	Polyclonal
<b>Isotype</b>	Rabbit IgG
<b>Calculated MW</b>	51896
<b>Antigen Region</b>	210-239

## Additional Information

---

<b>Gene ID</b>	8678
<b>Other Names</b>	Beclin-1, Coiled-coil myosin-like BCL2-interacting protein, Protein GT197, BECN1, GT197
<b>Target/Specificity</b>	This Beclin 1 antibody is generated from rabbits immunized with a KLH conjugated synthetic peptide between 210-239 amino acids from human Beclin 1.
<b>Dilution</b>	WB~~1:1000 IHC-P~~1:100~500 FC~~1:10~50 E~~Use at an assay dependent concentration.
<b>Format</b>	Purified polyclonal antibody supplied in PBS with 0.09% (W/V) sodium azide. This antibody is prepared by Saturated Ammonium Sulfate (SAS) precipitation followed by dialysis against PBS.
<b>Storage</b>	Maintain refrigerated at 2-8°C for up to 2 weeks. For long term storage store at -20°C in small aliquots to prevent freeze-thaw cycles.
<b>Precautions</b>	Beclin 1 Antibody is for research use only and not for use in diagnostic or therapeutic procedures.

## Protein Information

---

<b>Name</b>	BECN1
<b>Synonyms</b>	GT197

<b>Function</b>	Plays a central role in autophagy (PubMed: <a href="#">18570871</a> , PubMed: <a href="#">21358617</a> , PubMed: <a href="#">23184933</a> , PubMed: <a href="#">23974797</a> , PubMed: <a href="#">25484083</a> , PubMed: <a href="#">28445460</a> , PubMed: <a href="#">37776275</a> ). Acts as a core subunit of the PI3K complex that mediates formation of phosphatidylinositol 3-phosphate; different complex forms are believed to play a role in multiple membrane trafficking pathways: PI3KC3-C1 is involved in initiation of autophagosomes and PI3KC3-C2 in maturation of autophagosomes and endocytosis. Involved in regulation of degradative endocytic trafficking and required for the abscission step in cytokinesis, probably in the context of PI3KC3-C2 (PubMed: <a href="#">20208530</a> , PubMed: <a href="#">20643123</a> , PubMed: <a href="#">23974797</a> , PubMed: <a href="#">26783301</a> ). Essential for the formation of PI3KC3-C2 but not PI3KC3-C1 PI3K complex forms. Involved in endocytosis (PubMed: <a href="#">25275521</a> ). May play a role in antiviral host defense.
<b>Cellular Location</b>	Cytoplasm. Golgi apparatus, trans-Golgi network membrane; Peripheral membrane protein. Endosome membrane; Peripheral membrane protein. Endoplasmic reticulum membrane; Peripheral membrane protein. Mitochondrion membrane; Peripheral membrane protein. Endosome {ECO:0000250 UniProtKB:O88597} Cytoplasmic vesicle, autophagosome. Note=Interaction with ATG14 promotes translocation to autophagosomes. Expressed in dendrites and cell bodies of cerebellar Purkinje cells (By similarity) {ECO:0000250 UniProtKB:O88597, ECO:0000269 PubMed:19050071} [Beclin-1-C 37 kDa]: Mitochondrion {ECO:0000250 UniProtKB:O88597}
<b>Tissue Location</b>	Ubiquitous.

## Background

---

Macroautophagy is the major inducible pathway for the general turnover of cytoplasmic constituents in eukaryotic cells, it is also responsible for the degradation of active cytoplasmic enzymes and organelles during nutrient starvation. Macroautophagy involves the formation of double-membrane bound autophagosomes which enclose the cytoplasmic constituent targeted for degradation in a membrane bound structure, which then fuse with the lysosome (or vacuole) releasing a single-membrane bound autophagic bodies which are then degraded within the lysosome (or vacuole). Beclin 1 plays a role in two fundamentally important cell biological pathways: autophagy and apoptosis. Beclin 1 is thought to function as a VPS and autophagy protein as part of a complex with Class III PI3 kinase, Vps34.

## References

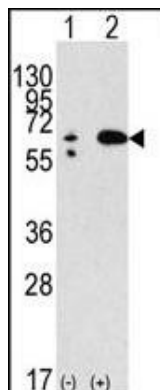
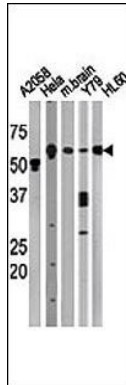
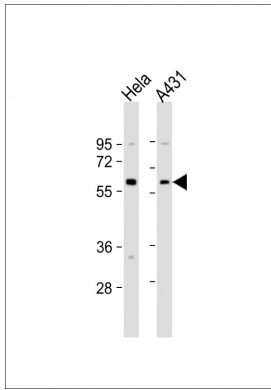
---

Baehrecke EH. Nat Rev Mol Cell Biol. 6(6):505-10. (2005)  
Lum JJ, et al. Nat Rev Mol Cell Biol. 6(6):439-48. (2005)  
Greenberg JT. Dev Cell. 8(6):799-801. (2005)  
Levine B. Cell. 120(2):159-62. (2005)  
Shintani T and Klionsky DJ. Science. 306(5698):990-5. (2004)  
Liang,X.H., et al. J. Virol. 72 (11), 8586-8596 (1998)  
Aita V.M., et al. Genomics 59:59-65(1999).

## Images

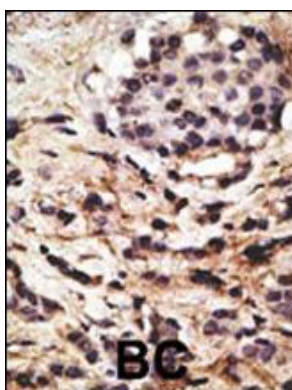
---

All lanes : Anti-Beclin-1 Antibody (E225) at 1:4000 dilution  
Lane 1: Hela whole cell lysate Lane 2: A431 whole cell lysate  
Lysates/proteins at 20 µg per lane. Secondary Goat Anti-Rabbit IgG, (H+L), Peroxidase conjugated at 1/10000 dilution.  
Predicted band size : 52 kDa Blocking/Dilution buffer: 5% NFDM/TBST.



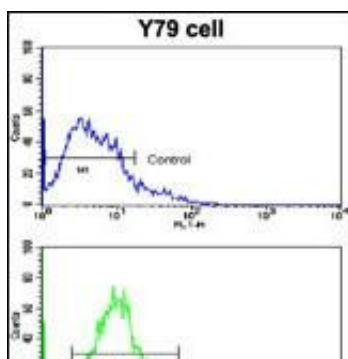
The anti-BECN1 Pab (Cat. #AP1818b) is used in Western blot to detect BECN1 in, from left to right, A2058, HeLa, mouse brain, Y79, and HL60 tissue lysates. BECN1 (arrow) was detected using the purified Pab.

Western blot analysis of anti-hBECN1-E225 Pab (Cat. #AP1818b) in 293 cell line lysates transiently transfected with the BECN1 gene (2ug/lane). hBECN1-E225 (arrow) was detected using the purified Pab.



Formalin-fixed and paraffin-embedded human cancer tissue reacted with the primary antibody, which was peroxidase-conjugated to the secondary antibody, followed by DAB staining. This data demonstrates the use of this antibody for immunohistochemistry; clinical relevance has not been evaluated. BC = breast carcinoma; HC = hepatocarcinoma.

Flow cytometric analysis of Y79 cells using Beclin 1 (BECN1/APG6) Antibody (E225) (bottom histogram) compared to a negative control cell (top histogram). FITC-conjugated goat-anti-rabbit secondary antibodies were used for the analysis.



## Citations

---

- [Deficient tRNA posttranscription modification dysregulated the mitochondrial quality controls and apoptosis](#)
- [Enhanced autophagy promotes the clearance of in diabetic rats with wounds](#)
- [Isokotomolide A from Cinnamomum kotoense Induce Melanoma Autophagy and Apoptosis](#)
- [Helicobacter pylori cholesterol glucosylation modulates autophagy for increasing intracellular survival in macrophages](#)
- [Inhibition of excessive autophagy and mitophagy mediates neuroprotective effects of URB597 against chronic cerebral hypoperfusion](#)
- [Autophagy Constitutes a Protective Mechanism against Ethanol Toxicity in Mouse Astrocytes and Neurons](#)
- [IKK \$\beta\$ /NF \$\kappa\$ Bp65 activated by interleukin-13 targets the autophagy-related genes LC3B and beclin 1 in fibroblasts co-cultured with breast cancer cells](#)
- [Lipoxin A4 methyl ester alleviates vascular cognition impairment by regulating the expression of proteins related to autophagy and ER stress in the rat hippocampus](#)
- [Down-regulation of autophagy-related protein 5 \(ATG5\) contributes to the pathogenesis of early-stage cutaneous melanoma](#)
- [Curcumin-loaded  \$\beta\$ -cyclodextrin liposomal nanoparticles as delivery vehicles for osteosarcoma](#)
- [A non-canonical MEK/ERK signaling pathway regulates autophagy via regulating Beclin 1](#)

Please note: All products are 'FOR RESEARCH USE ONLY. NOT FOR USE IN DIAGNOSTIC OR THERAPEUTIC PROCEDURES'.