

OR4M2 Antibody (C-term)

Affinity Purified Rabbit Polyclonal Antibody (Pab)

Catalog # AP18203b

Product Information

Application	WB, E
Primary Accession	Q8NGB6
Other Accession	Q8NGD0 , NP_001004719.2
Reactivity	Human
Host	Rabbit
Clonality	Polyclonal
Isotype	Rabbit IgG
Clone Names	RB29973
Calculated MW	35416
Antigen Region	243-271

Additional Information

Gene ID	390538
Other Names	Olfactory receptor 4M2, Olfactory receptor OR15-3, OR4M2
Target/Specificity	This OR4M2 antibody is generated from rabbits immunized with a KLH conjugated synthetic peptide between 243-271 amino acids from the C-terminal region of human OR4M2.
Dilution	WB~~1:1000 E~~Use at an assay dependent concentration.
Format	Purified polyclonal antibody supplied in PBS with 0.09% (W/V) sodium azide. This antibody is purified through a protein A column, followed by peptide affinity purification.
Storage	Maintain refrigerated at 2-8°C for up to 2 weeks. For long term storage store at -20°C in small aliquots to prevent freeze-thaw cycles.
Precautions	OR4M2 Antibody (C-term) is for research use only and not for use in diagnostic or therapeutic procedures.

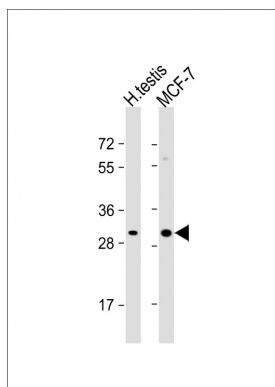
Protein Information

Name	OR4M2
Function	Odorant receptor.
Cellular Location	Cell membrane; Multi-pass membrane protein.

Background

OR4M2 is an odorant receptor (Potential).

Images



All lanes : Anti-OR4M2 Antibody (C-term) at 1:1000 dilution
Lane 1: human testis lysate
Lane 2: MCF-7 whole cell lysate
Lysates/proteins at 20 µg per lane.
Secondary Goat Anti-Rabbit IgG, (H+L), Peroxidase conjugated at 1/10000 dilution.
Predicted band size : 35 kDa
Blocking/Dilution buffer: 5% NFDM/TBST.

Please note: All products are 'FOR RESEARCH USE ONLY. NOT FOR USE IN DIAGNOSTIC OR THERAPEUTIC PROCEDURES'.