

GOLPH3L Antibody (Center)

Affinity Purified Rabbit Polyclonal Antibody (Pab)

Catalog # AP18204c

Product Information

Application	WB, E
Primary Accession	Q9H4A5
Other Accession	Q66H74 , Q8R088 , A6H7F6 , NP_060648.2
Reactivity	Human
Predicted	Bovine, Mouse, Rat
Host	Rabbit
Clonality	Polyclonal
Isotype	Rabbit IgG
Clone Names	RB30105
Calculated MW	32767
Antigen Region	105-133

Additional Information

Gene ID	55204
Other Names	Golgi phosphoprotein 3-like, GPP34-related protein, GOLPH3L, GPP34R
Target/Specificity	This GOLPH3L antibody is generated from rabbits immunized with a KLH conjugated synthetic peptide between 105-133 amino acids from the Central region of human GOLPH3L.
Dilution	WB~~1:1000 E~~Use at an assay dependent concentration.
Format	Purified polyclonal antibody supplied in PBS with 0.09% (W/V) sodium azide. This antibody is purified through a protein A column, followed by peptide affinity purification.
Storage	Maintain refrigerated at 2-8°C for up to 2 weeks. For long term storage store at -20°C in small aliquots to prevent freeze-thaw cycles.
Precautions	GOLPH3L Antibody (Center) is for research use only and not for use in diagnostic or therapeutic procedures.

Protein Information

Name	GOLPH3L
Synonyms	GPP34R
Function	Phosphatidylinositol-4-phosphate-binding protein that may antagonize the

action of GOLPH3 which is required for the process of vesicle budding at the Golgi and anterograde transport to the plasma membrane.

Cellular Location

Golgi apparatus, Golgi stack membrane; Peripheral membrane protein; Cytoplasmic side. Golgi apparatus, trans-Golgi network membrane; Peripheral membrane protein; Cytoplasmic side. Note=Phosphatidylinositol 4-phosphate (PtdIns4P)-binding mediates recruitment to Golgi membranes

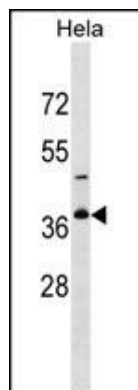
Background

The Golgi complex plays a key role in the sorting and modification of proteins exported from the endoplasmic reticulum. The protein encoded by this gene is localized at the Golgi stack and may have a regulatory role in Golgi trafficking. [provided by RefSeq].

References

Rose, J.E., et al. Mol. Med. 16 (7-8), 247-253 (2010) :
Lamesch, P., et al. Genomics 89(3):307-315(2007)
Bell, A.W., et al. J. Biol. Chem. 276(7):5152-5165(2001)

Images



GOLPH3L Antibody (Center) (Cat. #AP18204c) western blot analysis in HeLa cell line lysates (35ug/lane). This demonstrates the GOLPH3L antibody detected the GOLPH3L protein (arrow).

Please note: All products are 'FOR RESEARCH USE ONLY. NOT FOR USE IN DIAGNOSTIC OR THERAPEUTIC PROCEDURES'.