

# SPATA21 Antibody (C-term)

Affinity Purified Rabbit Polyclonal Antibody (Pab)

Catalog # AP18221b

## Product Information

---

Application	WB, E
Primary Accession	<a href="#">Q7Z572</a>
Other Accession	<a href="#">NP_940948.1</a>
Reactivity	Human
Host	Rabbit
Clonality	Polyclonal
Isotype	Rabbit IgG
Clone Names	RB33181
Calculated MW	52207
Antigen Region	396-424

## Additional Information

---

Gene ID	374955
Other Names	Spermatogenesis-associated protein 21, SPATA21
Target/Specificity	This SPATA21 antibody is generated from rabbits immunized with a KLH conjugated synthetic peptide between 396-424 amino acids from the C-terminal region of human SPATA21.
Dilution	WB~~1:1000 E~~Use at an assay dependent concentration.
Format	Purified polyclonal antibody supplied in PBS with 0.09% (W/V) sodium azide. This antibody is purified through a protein A column, followed by peptide affinity purification.
Storage	Maintain refrigerated at 2-8°C for up to 2 weeks. For long term storage store at -20°C in small aliquots to prevent freeze-thaw cycles.
Precautions	SPATA21 Antibody (C-term) is for research use only and not for use in diagnostic or therapeutic procedures.

## Protein Information

---

Name	SPATA21
Function	Involved in the differentiation of haploid spermatids.

## Background

---

SPATA21 is involved in the differentiation of haploid spermatids (By similarity).

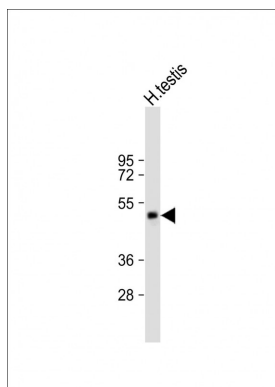
## References

---

Strausberg, R.L., et al. Proc. Natl. Acad. Sci. U.S.A. 99(26):16899-16903(2002)

## Images

---



Anti-SPATA21 Antibody (C-term) at 1:1000 dilution + human testis lysate Lysates/proteins at 20 µg per lane. Secondary Goat Anti-Rabbit IgG, (H+L), Peroxidase conjugated at 1/10000 dilution. Predicted band size : 52 kDa Blocking/Dilution buffer: 5% NFDM/TBST.

Please note: All products are 'FOR RESEARCH USE ONLY. NOT FOR USE IN DIAGNOSTIC OR THERAPEUTIC PROCEDURES'.