

RHPN1 Antibody (C-term)

Affinity Purified Rabbit Polyclonal Antibody (Pab)

Catalog # AP18237b

Product Information

Application	WB, E
Primary Accession	Q8TCX5
Other Accession	NP_443156.2
Reactivity	Human, Mouse
Host	Rabbit
Clonality	Polyclonal
Isotype	Rabbit IgG
Clone Names	RB37618
Calculated MW	73590
Antigen Region	478-505

Additional Information

Gene ID	114822
Other Names	Rhopilin-1, GTP-Rho-binding protein 1, RHPN1, KIAA1929
Target/Specificity	This RHPN1 antibody is generated from rabbits immunized with a KLH conjugated synthetic peptide between 478-505 amino acids from the C-terminal region of human RHPN1.
Dilution	WB~~1:1000 E~~Use at an assay dependent concentration.
Format	Purified polyclonal antibody supplied in PBS with 0.09% (W/V) sodium azide. This antibody is purified through a protein A column, followed by peptide affinity purification.
Storage	Maintain refrigerated at 2-8°C for up to 2 weeks. For long term storage store at -20°C in small aliquots to prevent freeze-thaw cycles.
Precautions	RHPN1 Antibody (C-term) is for research use only and not for use in diagnostic or therapeutic procedures.

Protein Information

Name	RHPN1 (HGNC:19973)
Synonyms	KIAA1929
Function	Has no enzymatic activity. May serve as a target for Rho, and interact with some cytoskeletal component upon Rho binding or relay a Rho signal to other

molecules.

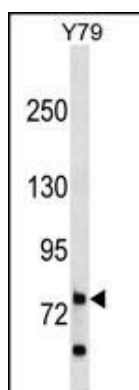
Background

RHPN1 has no enzymatic activity. May serve as a target for Rho, and interact with some cytoskeletal component upon Rho binding or relay a Rho signal to other molecules (By similarity).

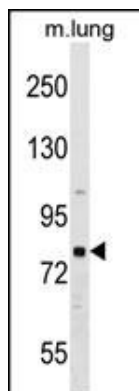
References

Jaffe, A.B., et al. Mol. Cell. Biol. 24(4):1736-1746(2004)
Peck, J.W., et al. J. Biol. Chem. 277(46):43924-43932(2002)
Fujita, A., et al. J. Cell. Sci. 113 (PT 1), 103-112 (2000) :

Images



RHPN1 Antibody (C-term) (Cat. #AP18237b) western blot analysis in Y79 cell line lysates (35ug/lane). This demonstrates the RHPN1 antibody detected the RHPN1 protein (arrow).



RHPN1 Antibody (C-term) (Cat. #AP18237b) western blot analysis in mouse lung tissue lysates (35ug/lane). This demonstrates the RHPN1 antibody detected the RHPN1 protein (arrow).

Please note: All products are 'FOR RESEARCH USE ONLY. NOT FOR USE IN DIAGNOSTIC OR THERAPEUTIC PROCEDURES'.