

# MBD3L1 Antibody (C-term)

Affinity Purified Rabbit Polyclonal Antibody (Pab)

Catalog # AP18250b

## Product Information

---

Application	WB, E
Primary Accession	<a href="#">Q8WWY6</a>
Other Accession	<a href="#">NP_660209.2</a>
Reactivity	Human
Host	Rabbit
Clonality	Polyclonal
Isotype	Rabbit IgG
Clone Names	RB37937
Calculated MW	21616
Antigen Region	168-194

## Additional Information

---

Gene ID	85509
Other Names	Methyl-CpG-binding domain protein 3-like 1, MBD3-like protein 1, MBD3L1, MBD3L
Target/Specificity	This MBD3L1 antibody is generated from rabbits immunized with a KLH conjugated synthetic peptide between 168-194 amino acids from the C-terminal region of human MBD3L1.
Dilution	WB~~1:1000 E~~Use at an assay dependent concentration.
Format	Purified polyclonal antibody supplied in PBS with 0.09% (W/V) sodium azide. This antibody is purified through a protein A column, followed by peptide affinity purification.
Storage	Maintain refrigerated at 2-8°C for up to 2 weeks. For long term storage store at -20°C in small aliquots to prevent freeze-thaw cycles.
Precautions	MBD3L1 Antibody (C-term) is for research use only and not for use in diagnostic or therapeutic procedures.

## Protein Information

---

Name	MBD3L1
Synonyms	MBD3L
Function	Transcriptional repressor.

<b>Cellular Location</b>	Nucleus. Note=Nuclear, in large foci
<b>Tissue Location</b>	Highly expressed in testis. Detected at low levels in pancreas. Not detected in the other tissues tested

## Background

---

This gene encodes a protein that is related to methyl-CpG-binding proteins but lacks the methyl-CpG binding domain. The protein is localized to discrete areas in the nucleus, and expression appears to be restricted to round spermatids, suggesting that the protein plays a role in the postmeiotic stages of male germ cell development.

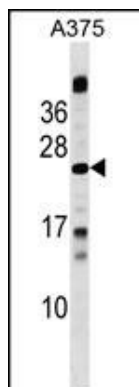
## References

---

Jiang, C.L., et al. J. Biol. Chem. 279(50):52456-52464(2004)  
Yao, Y.L., et al. J. Biol. Chem. 278(43):42560-42568(2003)  
Jiang, C.L., et al. Genomics 80(6):621-629(2002)

## Images

---



MBD3L1 Antibody (C-term) (Cat. #AP18250b) western blot analysis in A375 cell line lysates (35ug/lane). This demonstrates the MBD3L1 antibody detected the MBD3L1 protein (arrow).

Please note: All products are 'FOR RESEARCH USE ONLY. NOT FOR USE IN DIAGNOSTIC OR THERAPEUTIC PROCEDURES'.