

# HAUS8 Antibody (N-term)

Affinity Purified Rabbit Polyclonal Antibody (Pab)

Catalog # AP18272a

## Product Information

---

Application	WB, E
Primary Accession	<a href="#">Q9BT25</a>
Other Accession	<a href="#">NP_219485.1</a>
Reactivity	Human
Host	Rabbit
Clonality	Polyclonal
Isotype	Rabbit IgG
Clone Names	RB38267
Calculated MW	44857
Antigen Region	28-54

## Additional Information

---

Gene ID	93323
Other Names	HAUS augmin-like complex subunit 8, HEC1/NDC80-interacting centrosome-associated protein 1, Sarcoma antigen NY-SAR-48, HAUS8, HICE1
Target/Specificity	This HAUS8 antibody is generated from rabbits immunized with a KLH conjugated synthetic peptide between 28-54 amino acids from the N-terminal region of human HAUS8.
Dilution	WB~~1:1000 E~~Use at an assay dependent concentration.
Format	Purified polyclonal antibody supplied in PBS with 0.09% (W/V) sodium azide. This antibody is purified through a protein A column, followed by peptide affinity purification.
Storage	Maintain refrigerated at 2-8°C for up to 2 weeks. For long term storage store at -20°C in small aliquots to prevent freeze-thaw cycles.
Precautions	HAUS8 Antibody (N-term) is for research use only and not for use in diagnostic or therapeutic procedures.

## Protein Information

---

Name	HAUS8
Synonyms	HICE1
Function	Contributes to mitotic spindle assembly, maintenance of centrosome

integrity and completion of cytokinesis as part of the HAUS augmin-like complex.

## Cellular Location

Cytoplasm. Cytoplasm, cytoskeleton, microtubule organizing center, centrosome. Cytoplasm, cytoskeleton, spindle. Cytoplasm, cytoskeleton, spindle pole. Note=During interphase, primarily cytoplasmic and associates with centrosomes and with the mitotic spindles, preferentially at the spindle pole vicinity. During anaphase and telophase, additionally associates with the spindle midzone and midbody, respectively. Localizes to mitotic spindle microtubules

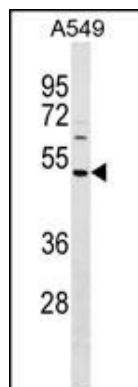
## Background

HAUS8 is 1 of 8 subunits of the 390-kD human augmin complex, or HAUS complex. The augmin complex was first identified in *Drosophila*, and its name comes from the Latin verb 'augmentare,' meaning 'to increase.' The augmin complex is a microtubule-binding complex involved in microtubule generation within the mitotic spindle and is vital to mitotic spindle assembly (Goshima et al., 2008 [PubMed 18443220]; Uehara et al., 2009 [PubMed 19369198]).

## References

Wu, G., et al. Mol. Biol. Cell 20(22):4686-4695(2009)  
Lawo, S., et al. Curr. Biol. 19(10):816-826(2009)  
Uehara, R., et al. Proc. Natl. Acad. Sci. U.S.A. 106(17):6998-7003(2009)  
Wu, G., et al. Mol. Cell. Biol. 28(11):3652-3662(2008)  
Goshima, G., et al. J. Cell Biol. 181(3):421-429(2008)

## Images



HAUS8 Antibody (N-term) (Cat. #AP18272a) western blot analysis in A549 cell line lysates (35ug/lane). This demonstrates the HAUS8 antibody detected the HAUS8 protein (arrow).

Please note: All products are 'FOR RESEARCH USE ONLY. NOT FOR USE IN DIAGNOSTIC OR THERAPEUTIC PROCEDURES'.