

MTF2 Antibody (Center)

Affinity Purified Rabbit Polyclonal Antibody (Pab)

Catalog # AP18277c

Product Information

Application	WB, E
Primary Accession	Q9Y483
Other Accession	Q02395 , NP_001157863.1
Reactivity	Human, Rat, Mouse
Host	Rabbit
Clonality	Polyclonal
Isotype	Rabbit IgG
Clone Names	RB38307
Calculated MW	67090
Antigen Region	289-317

Additional Information

Gene ID	22823
Other Names	Metal-response element-binding transcription factor 2, Metal regulatory transcription factor 2, Metal-response element DNA-binding protein M96, Polycomb-like protein 2, hPCL2, MTF2, PCL2
Target/Specificity	This MTF2 antibody is generated from rabbits immunized with a KLH conjugated synthetic peptide between 289-317 amino acids from the Central region of human MTF2.
Dilution	WB~~1:1000 E~~Use at an assay dependent concentration.
Format	Purified polyclonal antibody supplied in PBS with 0.09% (W/V) sodium azide. This antibody is purified through a protein A column, followed by peptide affinity purification.
Storage	Maintain refrigerated at 2-8°C for up to 2 weeks. For long term storage store at -20°C in small aliquots to prevent freeze-thaw cycles.
Precautions	MTF2 Antibody (Center) is for research use only and not for use in diagnostic or therapeutic procedures.

Protein Information

Name	MTF2
Synonyms	PCL2

Function	Polycomb group (PcG) protein that specifically binds histone H3 trimethylated at 'Lys-36' (H3K36me3) and recruits the PRC2 complex, thus enhancing PRC2 H3K27me3 methylation activity (PubMed: 23142980 , PubMed: 23228662 , PubMed: 31959557). Regulates the transcriptional networks during embryonic stem cell self-renewal and differentiation (By similarity). Promotes recruitment of the PRC2 complex to the inactive X chromosome in differentiating XX ES cells and PRC2 recruitment to target genes in undifferentiated ES cells (By similarity). Required to repress Hox genes by enhancing H3K27me3 methylation of the PRC2 complex (By similarity). In some conditions may act as an inhibitor of PRC2 activity: able to activate the CDKN2A gene and promote cellular senescence by suppressing the catalytic activity of the PRC2 complex locally (By similarity). Binds to the metal- regulating-element (MRE) of MT1A gene promoter (By similarity).
Cellular Location	Nucleus. Note=Localizes to chromatin as part of the PRC2 complex

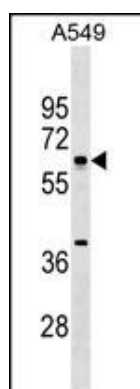
Background

MTF2 binds to the metal-regulating-element (MRE) of metallothionein-1A gene promoter. Binding is zinc-dependent (By similarity).

References

Wang, S., et al. Gene 343(1):69-78(2004)
 Colland, F., et al. Genome Res. 14(7):1324-1332(2004)
 Inouye, C., et al. DNA Cell Biol. 13(7):731-742(1994)

Images



MTF2 Antibody (Center) (Cat. #AP18277c) western blot analysis in A549 cell line lysates (35ug/lane). This demonstrates the MTF2 antibody detected the MTF2 protein (arrow).

Please note: All products are 'FOR RESEARCH USE ONLY. NOT FOR USE IN DIAGNOSTIC OR THERAPEUTIC PROCEDURES'.