

# NAP1L2 Antibody (N-term)

Affinity Purified Rabbit Polyclonal Antibody (Pab)

Catalog # AP18278a

## Product Information

---

<b>Application</b>	WB, E
<b>Primary Accession</b>	<a href="#">Q9ULW6</a>
<b>Other Accession</b>	<a href="#">P51860</a> , <a href="#">NP_068798.1</a>
<b>Reactivity</b>	Human
<b>Predicted</b>	Mouse
<b>Host</b>	Rabbit
<b>Clonality</b>	Polyclonal
<b>Isotype</b>	Rabbit IgG
<b>Clone Names</b>	RB38310
<b>Calculated MW</b>	52542
<b>Antigen Region</b>	113-139

## Additional Information

---

<b>Gene ID</b>	4674
<b>Other Names</b>	Nucleosome assembly protein 1-like 2, Brain-specific protein, X-linked, NAP1L2, BPX
<b>Target/Specificity</b>	This NAP1L2 antibody is generated from rabbits immunized with a KLH conjugated synthetic peptide between 113-139 amino acids from the N-terminal region of human NAP1L2.
<b>Dilution</b>	WB~~1:1000 E~~Use at an assay dependent concentration.
<b>Format</b>	Purified polyclonal antibody supplied in PBS with 0.09% (W/V) sodium azide. This antibody is purified through a protein A column, followed by peptide affinity purification.
<b>Storage</b>	Maintain refrigerated at 2-8°C for up to 2 weeks. For long term storage store at -20°C in small aliquots to prevent freeze-thaw cycles.
<b>Precautions</b>	NAP1L2 Antibody (N-term) is for research use only and not for use in diagnostic or therapeutic procedures.

## Protein Information

---

<b>Name</b>	NAP1L2
<b>Synonyms</b>	BPX

<b>Function</b>	Acidic protein which may be involved in interactions with other proteins or DNA.
<b>Cellular Location</b>	Nucleus.

## Background

---

This gene encodes a member of the nucleosome assembly protein (NAP) family. The function of this family member is unknown; however, mouse studies suggest that it represents a class of tissue-specific factors interacting with chromatin to regulate neuronal cell proliferation.

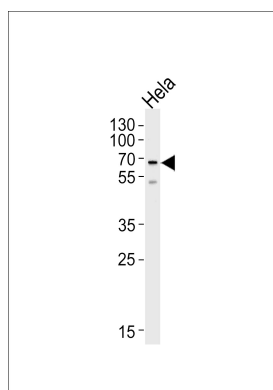
## References

---

Rogner, U.C., et al. Nat. Genet. 25(4):431-435(2000)  
Rougeulle, C., et al. Hum. Mol. Genet. 5(1):41-49(1996)

## Images

---



Western blot analysis of lysate from HeLa cell line, using NAP1L2 Antibody (N-term)(Cat. #AP18278a). AP18278a was diluted at 1:1000 at each lane. A goat anti-rabbit IgG H&L(HRP) at 1:5000 dilution was used as the secondary antibody. Lysate at 35ug per lane.

Please note: All products are 'FOR RESEARCH USE ONLY. NOT FOR USE IN DIAGNOSTIC OR THERAPEUTIC PROCEDURES'.