

RPAP3 Antibody (Center)

Affinity Purified Rabbit Polyclonal Antibody (Pab)

Catalog # AP18284c

Product Information

Application	WB, E
Primary Accession	Q9H6T3
Other Accession	NP_001139547.1
Reactivity	Human
Host	Rabbit
Clonality	Polyclonal
Isotype	Rabbit IgG
Clone Names	RB38355
Calculated MW	75719
Antigen Region	311-338

Additional Information

Gene ID	79657
Other Names	RNA polymerase II-associated protein 3, RPAP3
Target/Specificity	This RPAP3 antibody is generated from rabbits immunized with a KLH conjugated synthetic peptide between 311-338 amino acids from the Central region of human RPAP3.
Dilution	WB~~1:1000 E~~Use at an assay dependent concentration.
Format	Purified polyclonal antibody supplied in PBS with 0.09% (W/V) sodium azide. This antibody is purified through a protein A column, followed by peptide affinity purification.
Storage	Maintain refrigerated at 2-8°C for up to 2 weeks. For long term storage store at -20°C in small aliquots to prevent freeze-thaw cycles.
Precautions	RPAP3 Antibody (Center) is for research use only and not for use in diagnostic or therapeutic procedures.

Protein Information

Name	RPAP3
Function	Forms an interface between the RNA polymerase II enzyme and chaperone/scaffolding protein, suggesting that it is required to connect RNA polymerase II to regulators of protein complex formation.

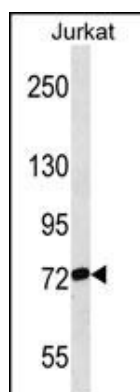
Background

This gene encodes an RNA polymerase II-associated protein. The encoded protein may function in transcriptional regulation and may also regulate apoptosis. Alternatively spliced transcript variants have been described.

References

Cloutier, P., et al. Methods 48(4):381-386(2009)
Ni, L., et al. J. Cell. Biochem. 106(5):920-928(2009)
Itsuki, Y., et al. FEBS Lett. 582(16):2365-2370(2008)
Jeronimo, C., et al. Mol. Cell 27(2):262-274(2007)

Images



RPAP3 Antibody (Center) (Cat. #AP18284c) western blot analysis in Jurkat cell line lysates (35ug/lane). This demonstrates the RPAP3 antibody detected the RPAP3 protein (arrow).

Please note: All products are 'FOR RESEARCH USE ONLY. NOT FOR USE IN DIAGNOSTIC OR THERAPEUTIC PROCEDURES'.