

TIGD1 Antibody (N-term)

Affinity Purified Rabbit Polyclonal Antibody (Pab)

Catalog # AP18291a

Product Information

| | |
|-------------------|-----------------------------|
| Application | WB, E |
| Primary Accession | Q96MW7 |
| Other Accession | NP_663748.1 |
| Reactivity | Human |
| Host | Rabbit |
| Clonality | Polyclonal |
| Isotype | Rabbit IgG |
| Clone Names | RB38370 |
| Calculated MW | 67299 |
| Antigen Region | 123-149 |

Additional Information

| | |
|--------------------|--|
| Gene ID | 200765 |
| Other Names | Tigger transposable element-derived protein 1, TIGD1 |
| Target/Specificity | This TIGD1 antibody is generated from rabbits immunized with a KLH conjugated synthetic peptide between 123-149 amino acids from the N-terminal region of human TIGD1. |
| Dilution | WB~~1:1000 E~~Use at an assay dependent concentration. |
| Format | Purified polyclonal antibody supplied in PBS with 0.09% (W/V) sodium azide. This antibody is purified through a protein A column, followed by peptide affinity purification. |
| Storage | Maintain refrigerated at 2-8°C for up to 2 weeks. For long term storage store at -20°C in small aliquots to prevent freeze-thaw cycles. |
| Precautions | TIGD1 Antibody (N-term) is for research use only and not for use in diagnostic or therapeutic procedures. |

Protein Information

| | |
|-------------------|----------|
| Name | TIGD1 |
| Cellular Location | Nucleus. |

Background

The protein encoded by this gene belongs to the tigger subfamily of the pogo superfamily of DNA-mediated transposons in humans. These proteins are related to DNA transposons found in fungi and nematodes, and more distantly to the Tc1 and mariner transposases. They are also very similar to the major mammalian centromere protein B. The exact function of this gene is not known.

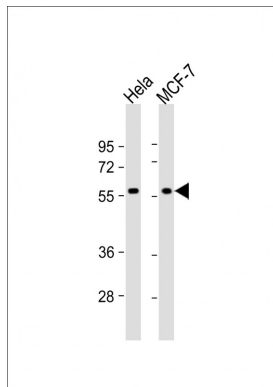
References

Hillier, L.W., et al. Nature 434(7034):724-731(2005)

Robertson, H.M. Mol. Gen. Genet. 252(6):761-766(1996)

Smit, A.F., et al. Proc. Natl. Acad. Sci. U.S.A. 93(4):1443-1448(1996)

Images



All lanes : Anti-TIGD1 Antibody (N-term) at 1:1000 dilution
Lane 1: HeLa whole cell lysate Lane 2: MCF-7 whole cell lysate
Lysates/proteins at 20 µg per lane. Secondary Goat Anti-Rabbit IgG, (H+L), Peroxidase conjugated at 1/10000 dilution. Predicted band size : 67 kDa
Blocking/Dilution buffer: 5% NFDM/TBST.

Please note: All products are 'FOR RESEARCH USE ONLY. NOT FOR USE IN DIAGNOSTIC OR THERAPEUTIC PROCEDURES'.