

SDR39U1 Antibody (N-term)

Affinity Purified Rabbit Polyclonal Antibody (Pab)

Catalog # AP18301a

Product Information

Application	WB, E
Primary Accession	Q9NRG7
Other Accession	Q5M8N4 , NP_064580.2
Reactivity	Human
Predicted	Mouse
Host	Rabbit
Clonality	Polyclonal
Isotype	Rabbit IgG
Clone Names	RB38394
Calculated MW	31077
Antigen Region	77-103

Additional Information

Gene ID	56948
Other Names	Epimerase family protein SDR39U1, 111-, Short-chain dehydrogenase/reductase family 39U member 1, SDR39U1, C14orf124, HCDI
Target/Specificity	This SDR39U1 antibody is generated from rabbits immunized with a KLH conjugated synthetic peptide between 77-103 amino acids from the N-terminal region of human SDR39U1.
Dilution	WB~~1:1000 E~~Use at an assay dependent concentration.
Format	Purified polyclonal antibody supplied in PBS with 0.09% (W/V) sodium azide. This antibody is purified through a protein A column, followed by peptide affinity purification.
Storage	Maintain refrigerated at 2-8°C for up to 2 weeks. For long term storage store at -20°C in small aliquots to prevent freeze-thaw cycles.
Precautions	SDR39U1 Antibody (N-term) is for research use only and not for use in diagnostic or therapeutic procedures.

Protein Information

Name	SDR39U1
Synonyms	C14orf124, HCDI

Function	Putative NADP-dependent oxidoreductase.
Tissue Location	Expressed in adrenal gland.

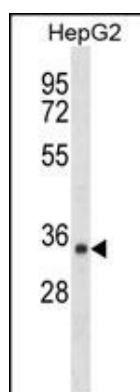
Background

The function of this protein remains unknown.

References

Persson, B., et al. Chem. Biol. Interact. 178 (1-3), 94-98 (2009) :

Images



SDR39U1 Antibody (N-term) (Cat. #AP18301a) western blot analysis in HepG2 cell line lysates (35ug/lane). This demonstrates the SDR39U1 antibody detected the SDR39U1 protein (arrow).

Please note: All products are 'FOR RESEARCH USE ONLY. NOT FOR USE IN DIAGNOSTIC OR THERAPEUTIC PROCEDURES'.