

# OR2A4 Antibody (N-term)

Affinity Purified Rabbit Polyclonal Antibody (Pab)

Catalog # AP18306a

## Product Information

---

<b>Application</b>	WB, E
<b>Primary Accession</b>	<a href="#">Q95047</a>
<b>Other Accession</b>	<a href="#">Q96R45</a> , <a href="#">NP_112170.1</a>
<b>Reactivity</b>	Human
<b>Host</b>	Rabbit
<b>Clonality</b>	Polyclonal
<b>Isotype</b>	Rabbit IgG
<b>Clone Names</b>	RB38534
<b>Calculated MW</b>	34802
<b>Antigen Region</b>	70-96

## Additional Information

---

<b>Gene ID</b>	79541
<b>Other Names</b>	Olfactory receptor 2A4, Olfactory receptor 2A10, Olfactory receptor OR6-37, OR2A4, OR2A10
<b>Target/Specificity</b>	This OR2A4 antibody is generated from rabbits immunized with a KLH conjugated synthetic peptide between 70-96 amino acids from the N-terminal region of human OR2A4.
<b>Dilution</b>	WB~~1:1000 E~~Use at an assay dependent concentration.
<b>Format</b>	Purified polyclonal antibody supplied in PBS with 0.09% (W/V) sodium azide. This antibody is purified through a protein A column, followed by peptide affinity purification.
<b>Storage</b>	Maintain refrigerated at 2-8°C for up to 2 weeks. For long term storage store at -20°C in small aliquots to prevent freeze-thaw cycles.
<b>Precautions</b>	OR2A4 Antibody (N-term) is for research use only and not for use in diagnostic or therapeutic procedures.

## Protein Information

---

<b>Name</b>	OR2A4
<b>Synonyms</b>	OR2A10
<b>Function</b>	Odorant receptor.

**Cellular Location**

Cell membrane; Multi-pass membrane protein.

**Background**

---

Olfactory receptors interact with odorant molecules in the nose, to initiate a neuronal response that triggers the perception of a smell. The olfactory receptor proteins are members of a large family of G-protein-coupled receptors (GPCR) arising from single coding-exon genes. Olfactory receptors share a 7-transmembrane domain structure with many neurotransmitter and hormone receptors and are responsible for the recognition and G protein-mediated transduction of odorant signals. The olfactory receptor gene family is the largest in the genome. The nomenclature assigned to the olfactory receptor genes and proteins for this organism is independent of other organisms.

**References**

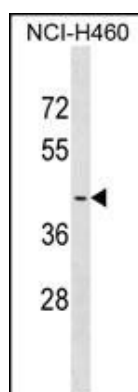
---

Malnic, B., et al. Proc. Natl. Acad. Sci. U.S.A. 101(8):2584-2589(2004)

Mungall, A.J., et al. Nature 425(6960):805-811(2003)

**Images**

---



OR2A4 Antibody (N-term) (Cat. #AP18306a) western blot analysis in NCI-H460 cell line lysates (35ug/lane). This demonstrates the OR2A4 antibody detected the OR2A4 protein (arrow).

Please note: All products are 'FOR RESEARCH USE ONLY. NOT FOR USE IN DIAGNOSTIC OR THERAPEUTIC PROCEDURES'.