

BARON Antibody (N-term)

Affinity Purified Rabbit Polyclonal Antibody (Pab)

Catalog # AP1831a

Product Information

Application	WB, IF, IHC-P, FC, E
Primary Accession	Q92622
Reactivity	Human
Host	Rabbit
Clonality	Polyclonal
Isotype	Rabbit IgG
Clone Names	RB18304
Calculated MW	108622
Antigen Region	241-271

Additional Information

Gene ID	9711
Other Names	Run domain Beclin-1 interacting and cysteine-rich containing protein, Rubicon, Beclin-1 associated RUN domain containing protein, Baron, KIAA0226
Target/Specificity	This BARON antibody is generated from rabbits immunized with a KLH conjugated synthetic peptide between 241-271 amino acids from the N-terminal region of human BARON.
Dilution	WB~~1:1000 IF~~1:100 IHC-P~~1:100~500 FC~~1:10~50 E~~Use at an assay dependent concentration.
Format	Purified polyclonal antibody supplied in PBS with 0.05% (V/V) Proclin 300. This antibody is purified through a protein A column, followed by peptide affinity purification.
Storage	Maintain refrigerated at 2-8°C for up to 2 weeks. For long term storage store at -20°C in small aliquots to prevent freeze-thaw cycles.
Precautions	BARON Antibody (N-term) is for research use only and not for use in diagnostic or therapeutic procedures.

Protein Information

Name	RUBCN (HGNC:28991)
Synonyms	KIAA0226

Function	Inhibits PIK3C3 activity; under basal conditions negatively regulates PI3K complex II (PI3KC3-C2) function in autophagy. Negatively regulates endosome maturation and degradative endocytic trafficking and impairs autophagosome maturation process. Can sequester UVRAG from association with a class C Vps complex (possibly the HOPS complex) and negatively regulates Rab7 activation (PubMed: 20974968 , PubMed: 21062745).
Cellular Location	Late endosome. Lysosome. Early endosome Note=Predominantly located in late endosomes/lysosomes, only partially detected in early endosome and not at all in the Golgi apparatus

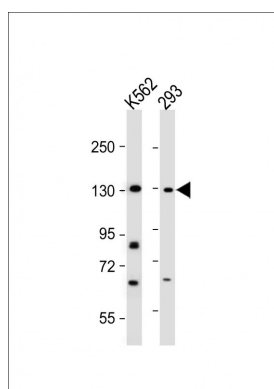
References

References for U251 cell line:

1. Westermarck B.; Pontén J.; Hugosson R. (1973). "Determinants for the establishment of permanent tissue culture lines from human gliomas". *Acta Pathol Microbiol Scand A*. 81:791-805. [PMID: 4359449].
2. Pontén, J., Westermarck B. (1978). "Properties of Human Malignant Glioma Cells in Vitro". *Medical Biology* 56: 184-193.[PMID: 359950].
3. Geng Y.; Kohli L.; Klocke B.J.; Roth K.A.(2010). "Chloroquine-induced autophagic vacuole accumulation and cell death in glioma cells is p53 independent". *Neuro Oncol*. 12(5): 473-481.[PMID: 20406898].

AP1831a

Images



All lanes : Anti-BARON Antibody (N-term) at 1:2000 dilution Lane 1: K562 whole cell lysate Lane 2: 293 whole cell lysate Lysates/proteins at 20 µg per lane. Secondary Goat Anti-Rabbit IgG, (H+L), Peroxidase conjugated at 1/10000 dilution. Predicted band size : 109 kDa Blocking/Dilution buffer: 5% NFDM/TBST.

Please note: All products are 'FOR RESEARCH USE ONLY. NOT FOR USE IN DIAGNOSTIC OR THERAPEUTIC PROCEDURES'.