

BARON Antibody (Center)

Affinity Purified Rabbit Polyclonal Antibody (Pab)

Catalog # AP1831c

Product Information

Application	IHC-P, FC, WB, E
Primary Accession	Q92622
Other Accession	Q80U62
Reactivity	Human
Predicted	Mouse
Host	Rabbit
Clonality	Polyclonal
Isotype	Rabbit IgG
Clone Names	RB18182
Calculated MW	108622
Antigen Region	656-684

Additional Information

Gene ID	9711
Other Names	Run domain Beclin-1 interacting and cysteine-rich containing protein, Rubicon, Beclin-1 associated RUN domain containing protein, Baron, KIAA0226
Target/Specificity	This BARON antibody is generated from rabbits immunized with a KLH conjugated synthetic peptide between 656-684 amino acids from the Central region of human BARON.
Dilution	IHC-P~~1:100~500 FC~~1:10~50 WB~~1:1000 E~~Use at an assay dependent concentration.
Format	Purified polyclonal antibody supplied in PBS with 0.09% (W/V) sodium azide. This antibody is purified through a protein A column, followed by peptide affinity purification.
Storage	Maintain refrigerated at 2-8°C for up to 2 weeks. For long term storage store at -20°C in small aliquots to prevent freeze-thaw cycles.
Precautions	BARON Antibody (Center) is for research use only and not for use in diagnostic or therapeutic procedures.

Protein Information

Name	RUBCN (HGNC:28991)
-------------	--------------------------------------

Synonyms

KIAA0226

Function

Inhibits PIK3C3 activity; under basal conditions negatively regulates PI3K complex II (PI3KC3-C2) function in autophagy. Negatively regulates endosome maturation and degradative endocytic trafficking and impairs autophagosome maturation process. Can sequester UVRAG from association with a class C Vps complex (possibly the HOPS complex) and negatively regulates Rab7 activation (PubMed:[20974968](#), PubMed:[21062745](#)).

Cellular Location

Late endosome. Lysosome. Early endosome Note=Predominantly located in late endosomes/lysosomes, only partially detected in early endosome and not at all in the Golgi apparatus

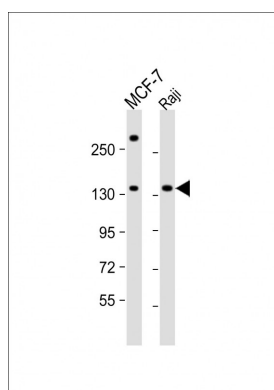
References

Matsunaga, K., et al. Nat. Cell Biol. 11(4):385-396(2009)

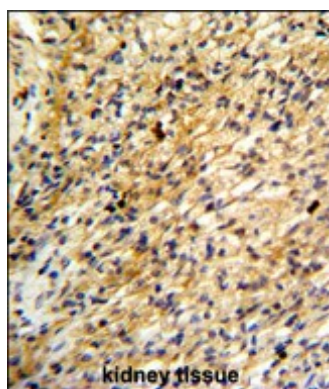
Muzny, D.M., et al. Nature 440(7088):1194-1198(2006)

Venter, J.C., et al. Science 291(5507):1304-1351(2001)

Images

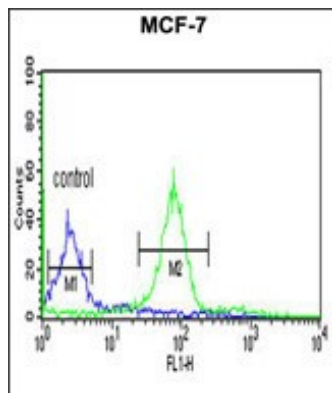


All lanes : Anti-BARON Antibody (Center) at 1:1000 dilution Lane 1: MCF-7 whole cell lysate Lane 2: Raji whole cell lysate Lysates/proteins at 20 µg per lane. Secondary Goat Anti-Rabbit IgG, (H+L), Peroxidase conjugated at 1/10000 dilution. Predicted band size : 109 kDa Blocking/Dilution buffer: 5% NFDM/TBST.



Formalin-fixed and paraffin-embedded human kidney reacted with BARON Antibody (Center), which was peroxidase-conjugated to the secondary antibody, followed by DAB staining. This data demonstrates the use of this antibody for immunohistochemistry; clinical relevance has not been evaluated.

BARON Antibody (Center) (Cat. #AP1831c) flow cytometric analysis of MCF-7 cells (right histogram) compared to a negative control cell (left histogram). FITC-conjugated goat-anti-rabbit secondary antibodies were used for the analysis.



Please note: All products are 'FOR RESEARCH USE ONLY. NOT FOR USE IN DIAGNOSTIC OR THERAPEUTIC PROCEDURES'.