

# THAP10 Antibody (N-term)

Affinity Purified Rabbit Polyclonal Antibody (Pab)

Catalog # AP18325a

## Product Information

---

<b>Application</b>	WB, E
<b>Primary Accession</b>	<a href="#">Q9P2Z0</a>
<b>Other Accession</b>	<a href="#">NP_064532.1</a>
<b>Reactivity</b>	Human
<b>Host</b>	Rabbit
<b>Clonality</b>	Polyclonal
<b>Isotype</b>	Rabbit IgG
<b>Clone Names</b>	RB26260
<b>Calculated MW</b>	28351
<b>Antigen Region</b>	83-112

## Additional Information

---

<b>Gene ID</b>	56906
<b>Other Names</b>	THAP domain-containing protein 10, THAP10
<b>Target/Specificity</b>	This THAP10 antibody is generated from rabbits immunized with a KLH conjugated synthetic peptide between 83-112 amino acids from the N-terminal region of human THAP10.
<b>Dilution</b>	WB~~1:1000 E~~Use at an assay dependent concentration.
<b>Format</b>	Purified polyclonal antibody supplied in PBS with 0.09% (W/V) sodium azide. This antibody is purified through a protein A column, followed by peptide affinity purification.
<b>Storage</b>	Maintain refrigerated at 2-8°C for up to 2 weeks. For long term storage store at -20°C in small aliquots to prevent freeze-thaw cycles.
<b>Precautions</b>	THAP10 Antibody (N-term) is for research use only and not for use in diagnostic or therapeutic procedures.

## Protein Information

---

<b>Name</b>	THAP10
-------------	--------

## Background

---

This gene encodes a member of a family of proteins sharing an N-terminal Thanatos-associated domain. The

Thanatos-associated domain contains a zinc finger signature similar to DNA-binding domains. This gene is part of a bidirectional gene pair on the long arm of chromosome 15 that is regulated by estrogen and may play a role in breast cancer.

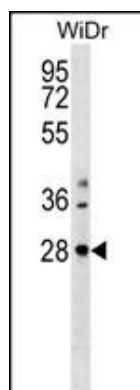
## References

---

De Souza Santos, E., et al. *Int. J. Oncol.* 33(1):25-31(2008)  
Olsen, J.V., et al. *Cell* 127(3):635-648(2006)  
Roussigne, M., et al. *Trends Biochem. Sci.* 28(2):66-69(2003)

## Images

---



THAP10 Antibody (N-term) (Cat. #AP18325a) western blot analysis in WiDr cell line lysates (35ug/lane). This demonstrates the THAP10 Antibody detected the THAP10 protein (arrow).

Please note: All products are 'FOR RESEARCH USE ONLY. NOT FOR USE IN DIAGNOSTIC OR THERAPEUTIC PROCEDURES'.