

# OSTM1 Antibody (C-term)

Affinity Purified Rabbit Polyclonal Antibody (Pab)

Catalog # AP18345b

## Product Information

---

Application	WB, E
Primary Accession	<a href="#">Q86WC4</a>
Other Accession	<a href="#">Q8BGT0</a> , <a href="#">NP_054747.2</a>
Reactivity	Human
Predicted	Mouse
Host	Rabbit
Clonality	Polyclonal
Isotype	Rabbit IgG
Clone Names	RB33416
Calculated MW	37257
Antigen Region	292-321

## Additional Information

---

Gene ID	28962
Other Names	Osteopetrosis-associated transmembrane protein 1, Chloride channel 7 beta subunit, OSTM1, GL
Target/Specificity	This OSTM1 antibody is generated from rabbits immunized with a KLH conjugated synthetic peptide between 292-321 amino acids from the C-terminal region of human OSTM1.
Dilution	WB~~1:1000 E~~Use at an assay dependent concentration.
Format	Purified polyclonal antibody supplied in PBS with 0.09% (W/V) sodium azide. This antibody is purified through a protein A column, followed by peptide affinity purification.
Storage	Maintain refrigerated at 2-8°C for up to 2 weeks. For long term storage store at -20°C in small aliquots to prevent freeze-thaw cycles.
Precautions	OSTM1 Antibody (C-term) is for research use only and not for use in diagnostic or therapeutic procedures.

## Protein Information

---

Name	OSTM1
Synonyms	GL

<b>Function</b>	Required for osteoclast and melanocyte maturation and function.
<b>Cellular Location</b>	Lysosome membrane; Single-pass type I membrane protein Note=Requires CLCN7 to travel to lysosomes

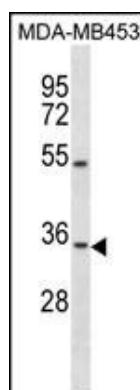
## Background

This gene encodes a protein that may be involved in the degradation of G proteins via the ubiquitin-dependent proteasome pathway. The encoded protein binds to members of subfamily A of the regulator of the G-protein signaling (RGS) family through an N-terminal leucine-rich region. This protein also has a central RING finger-like domain and E3 ubiquitin ligase activity. This protein is highly conserved from flies to humans. Defects in this gene may cause the autosomal recessive, infantile malignant form of osteopetrosis.

## References

Yerges, L.M., et al. J. Bone Miner. Res. 24(12):2039-2049(2009)  
Mazzolari, E., et al. Am. J. Hematol. 84(8):473-479(2009)  
Vieira, A.R., et al. Genet. Med. 10(9):668-674(2008)  
Feigin, M.E., et al. Cell. Signal. 20(5):949-957(2008)  
Maranda, B., et al. J. Bone Miner. Res. 23(2):296-300(2008)

## Images



OSTM1 Antibody (C-term) (Cat. #AP18345b) western blot analysis in MDA-MB453 cell line lysates (35ug/lane). This demonstrates the OSTM1 Antibody detected the OSTM1 protein (arrow).

Please note: All products are 'FOR RESEARCH USE ONLY. NOT FOR USE IN DIAGNOSTIC OR THERAPEUTIC PROCEDURES'.