

GLT8D1 Antibody (C-term)

Affinity Purified Rabbit Polyclonal Antibody (Pab)

Catalog # AP18349b

Product Information

Application	WB, E
Primary Accession	Q68CQ7
Other Accession	NP_001010983.1
Reactivity	Human
Host	Rabbit
Clonality	Polyclonal
Isotype	Rabbit IgG
Clone Names	RB34012
Calculated MW	41935
Antigen Region	338-366

Additional Information

Gene ID	55830
Other Names	Glycosyltransferase 8 domain-containing protein 1, 241-, GLT8D1, GALA4A
Target/Specificity	This GLT8D1 antibody is generated from rabbits immunized with a KLH conjugated synthetic peptide between 338-366 amino acids from the C-terminal region of human GLT8D1.
Dilution	WB~~1:1000 E~~Use at an assay dependent concentration.
Format	Purified polyclonal antibody supplied in PBS with 0.09% (W/V) sodium azide. This antibody is purified through a protein A column, followed by peptide affinity purification.
Storage	Maintain refrigerated at 2-8°C for up to 2 weeks. For long term storage store at -20°C in small aliquots to prevent freeze-thaw cycles.
Precautions	GLT8D1 Antibody (C-term) is for research use only and not for use in diagnostic or therapeutic procedures.

Protein Information

Name	GLT8D1
Synonyms	GALA4A
Cellular Location	Membrane; Single-pass type II membrane protein

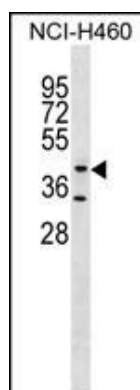
Background

This gene encodes a member of the glycosyltransferase family. The specific function of this protein has not been determined. Three alternatively spliced variants encoding the same isoform have been described.

References

Clark, H.F., et al. Genome Res. 13(10):2265-2270(2003)

Images



GLT8D1 Antibody (C-term) (Cat. #AP18349b) western blot analysis in NCI-H460 cell line lysates (35ug/lane). This demonstrates the GLT8D1 Antibody detected the GLT8D1 protein (arrow).

Please note: All products are 'FOR RESEARCH USE ONLY. NOT FOR USE IN DIAGNOSTIC OR THERAPEUTIC PROCEDURES'.