

SIRPD Antibody (Center)

Affinity Purified Rabbit Polyclonal Antibody (Pab)

Catalog # AP18390c

Product Information

Application	WB, E
Primary Accession	Q9H106
Other Accession	NP_848555.2
Reactivity	Human
Host	Rabbit
Clonality	Polyclonal
Isotype	Rabbit IgG
Clone Names	RB38400
Calculated MW	21687
Antigen Region	107-133

Additional Information

Gene ID	128646
Other Names	Signal-regulatory protein delta, SIRP-delta, Protein tyrosine phosphatase non-receptor type substrate 1-like 2, SIRPD, PTPNS1L2
Target/Specificity	This SIRPD antibody is generated from rabbits immunized with a KLH conjugated synthetic peptide between 107-133 amino acids from the Central region of human SIRPD.
Dilution	WB~~1:1000 E~~Use at an assay dependent concentration.
Format	Purified polyclonal antibody supplied in PBS with 0.09% (W/V) sodium azide. This antibody is purified through a protein A column, followed by peptide affinity purification.
Storage	Maintain refrigerated at 2-8°C for up to 2 weeks. For long term storage store at -20°C in small aliquots to prevent freeze-thaw cycles.
Precautions	SIRPD Antibody (Center) is for research use only and not for use in diagnostic or therapeutic procedures.

Protein Information

Name	SIRPD
Synonyms	PTPNS1L2
Cellular Location	Secreted.

Background

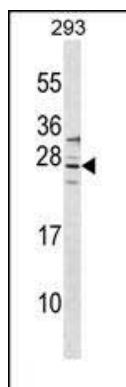
Contains 1 Ig-like V-type (immunoglobulin-like) domain.

References

van den Berg, T.K., et al. J. Immunol. 175(12):7788-7789(2005)

Deloukas, P., et al. Nature 414(6866):865-871(2001)

Images



SIRPD Antibody (Center) (Cat. #AP18390c) western blot analysis in 293 cell line lysates (35ug/lane). This demonstrates the SIRPD Antibody detected the SIRPD protein (arrow).

Please note: All products are 'FOR RESEARCH USE ONLY. NOT FOR USE IN DIAGNOSTIC OR THERAPEUTIC PROCEDURES'.