

EDA2R Antibody (C-term)

Affinity Purified Rabbit Polyclonal Antibody (Pab)

Catalog # AP18402b

Product Information

Application	WB, E
Primary Accession	Q9HAV5
Other Accession	NP_068555.1
Reactivity	Human
Host	Rabbit
Clonality	Polyclonal
Isotype	Rabbit IgG
Clone Names	RB38447
Calculated MW	32759
Antigen Region	267-297

Additional Information

Gene ID	60401
Other Names	Tumor necrosis factor receptor superfamily member 27, X-linked ectodysplasin-A2 receptor, EDA-A2 receptor, EDA2R, TNFRSF27, XEDAR
Target/Specificity	This EDA2R antibody is generated from rabbits immunized with a KLH conjugated synthetic peptide between 267-297 amino acids from the C-terminal region of human EDA2R.
Dilution	WB~~1:1000 E~~Use at an assay dependent concentration.
Format	Purified polyclonal antibody supplied in PBS with 0.09% (W/V) sodium azide. This antibody is purified through a protein A column, followed by peptide affinity purification.
Storage	Maintain refrigerated at 2-8°C for up to 2 weeks. For long term storage store at -20°C in small aliquots to prevent freeze-thaw cycles.
Precautions	EDA2R Antibody (C-term) is for research use only and not for use in diagnostic or therapeutic procedures.

Protein Information

Name	EDA2R
Synonyms	TNFRSF27, XEDAR
Function	Receptor for EDA isoform A2, but not for EDA isoform A1. Mediates the

activation of the NF-kappa-B and JNK pathways. Activation seems to be mediated by binding to TRAF3 and TRAF6.

Cellular Location

Membrane; Single-pass type III membrane protein.

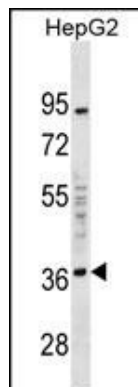
Background

EDA-A1 and EDA-A2 are two isoforms of ectodysplasin that are encoded by the anhidrotic ectodermal dysplasia (EDA) gene. Mutations in EDA give rise to a clinical syndrome characterized by loss of hair, sweat glands, and teeth. The protein encoded by this gene specifically binds to EDA-A2 isoform. This protein is a type III transmembrane protein of the TNFR (tumor necrosis factor receptor) superfamily, and contains 3 cysteine-rich repeats and a single transmembrane domain but lacks an N-terminal signal peptide. Multiple alternatively spliced transcript variants have been found for this gene, but some variants lack sufficient support. [provided by RefSeq].

References

Brockschmidt, F.F., et al. Br. J. Dermatol. 162(4):899-903(2010)
Tanikawa, C., et al. Oncogene 28(34):3081-3092(2009)
Fujimoto, A., et al. J. Hum. Genet. 54(8):461-465(2009)
Hillmer, A.M., et al. Hum. Genet. 126(2):255-264(2009)
Richards, J.B., et al. Nat. Genet. 40(11):1282-1284(2008)

Images



EDA2R Antibody (C-term) (Cat. #AP18402b) western blot analysis in HepG2 cell line lysates (35ug/lane). This demonstrates the EDA2R Antibody detected the EDA2R protein (arrow).

Please note: All products are 'FOR RESEARCH USE ONLY. NOT FOR USE IN DIAGNOSTIC OR THERAPEUTIC PROCEDURES'.