

ZNF691 Antibody (Center)

Affinity Purified Rabbit Polyclonal Antibody (Pab)

Catalog # AP18409c

Product Information

Application	WB, E
Primary Accession	Q5VV52
Other Accession	NP_056995.1
Reactivity	Human
Host	Rabbit
Clonality	Polyclonal
Isotype	Rabbit IgG
Clone Names	RB38472
Calculated MW	35810
Antigen Region	86-113

Additional Information

Gene ID	51058
Other Names	Zinc finger protein 691, ZNF691
Target/Specificity	This ZNF691 antibody is generated from rabbits immunized with a KLH conjugated synthetic peptide between 86-113 amino acids from the Central region of human ZNF691.
Dilution	WB~~1:1000 E~~Use at an assay dependent concentration.
Format	Purified polyclonal antibody supplied in PBS with 0.09% (W/V) sodium azide. This antibody is purified through a protein A column, followed by peptide affinity purification.
Storage	Maintain refrigerated at 2-8°C for up to 2 weeks. For long term storage store at -20°C in small aliquots to prevent freeze-thaw cycles.
Precautions	ZNF691 Antibody (Center) is for research use only and not for use in diagnostic or therapeutic procedures.

Protein Information

Name	ZNF691
Function	May be involved in transcriptional regulation.
Cellular Location	Nucleus.

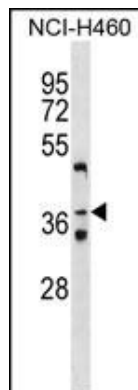
Background

ZNF691 may be involved in transcriptional regulation.

References

Gregory, S.G., et al. Nature 441(7091):315-321(2006)

Images



ZNF691 Antibody (Center) (Cat. #AP18409c) western blot analysis in NCI-H460 cell line lysates (35ug/lane). This demonstrates the ZNF691 Antibody detected the ZNF691 protein (arrow).

Please note: All products are 'FOR RESEARCH USE ONLY. NOT FOR USE IN DIAGNOSTIC OR THERAPEUTIC PROCEDURES'.