

DHRS4L2 Antibody (Center)

Affinity Purified Rabbit Polyclonal Antibody (Pab)

Catalog # AP18423c

Product Information

Application	WB, E
Primary Accession	Q6PKH6
Other Accession	Q9GKX2 , Q8WNVZ , Q9BTZ2
Reactivity	Human
Predicted	Pig, Rabbit
Host	Rabbit
Clonality	Polyclonal
Isotype	Rabbit IgG
Clone Names	RB38532
Calculated MW	24863
Antigen Region	132-158

Additional Information

Gene ID	317749
Other Names	Dehydrogenase/reductase SDR family member 4-like 2, 11--, DHRS4L2
Target/Specificity	This DHRS4L2 antibody is generated from rabbits immunized with a KLH conjugated synthetic peptide between 132-158 amino acids from the Central region of human DHRS4L2.
Dilution	WB~~1:1000 E~~Use at an assay dependent concentration.
Format	Purified polyclonal antibody supplied in PBS with 0.09% (W/V) sodium azide. This antibody is purified through a protein A column, followed by peptide affinity purification.
Storage	Maintain refrigerated at 2-8°C for up to 2 weeks. For long term storage store at -20°C in small aliquots to prevent freeze-thaw cycles.
Precautions	DHRS4L2 Antibody (Center) is for research use only and not for use in diagnostic or therapeutic procedures.

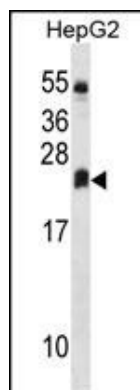
Protein Information

Name	DHRS4L2 (HGNC:19731)
Function	Probable oxidoreductase.
Cellular Location	Secreted.

Background

DHRS4L2 is probable oxidoreductase (By similarity).

Images



DHRS4L2 Antibody (Center) (Cat. #AP18423c) western blot analysis in HepG2 cell line lysates (35ug/lane). This demonstrates the DHRS4L2 Antibody detected the DHRS4L2 protein (arrow).

Please note: All products are 'FOR RESEARCH USE ONLY. NOT FOR USE IN DIAGNOSTIC OR THERAPEUTIC PROCEDURES'.