

EXD3 Antibody (Center)

Affinity Purified Rabbit Polyclonal Antibody (Pab)

Catalog # AP18441c

Product Information

Application	WB, E
Primary Accession	Q8N9H8
Other Accession	NP_060290.3
Reactivity	Human
Host	Rabbit
Clonality	Polyclonal
Isotype	Rabbit IgG
Clone Names	RB38763
Calculated MW	96598
Antigen Region	340-367

Additional Information

Gene ID	54932
Other Names	Exonuclease mut-7 homolog, 31--, Exonuclease 3'-5' domain-containing protein 3, EXD3
Target/Specificity	This EXD3 antibody is generated from rabbits immunized with a KLH conjugated synthetic peptide between 340-367 amino acids from the Central region of human EXD3.
Dilution	WB~~1:1000 E~~Use at an assay dependent concentration.
Format	Purified polyclonal antibody supplied in PBS with 0.09% (W/V) sodium azide. This antibody is purified through a protein A column, followed by peptide affinity purification.
Storage	Maintain refrigerated at 2-8°C for up to 2 weeks. For long term storage store at -20°C in small aliquots to prevent freeze-thaw cycles.
Precautions	EXD3 Antibody (Center) is for research use only and not for use in diagnostic or therapeutic procedures.

Protein Information

Name	EXD3
Function	Possesses 3'-5' exoribonuclease activity. Required for 3'-end trimming of AGO1-bound miRNAs (By similarity).

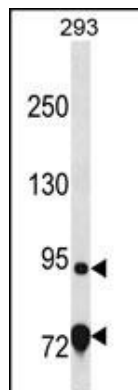
Background

The function of this protein remains unknown.

References

Venkatesan, K., et al. Nat. Methods 6(1):83-90(2009)

Images



EXD3 Antibody (Center) (Cat. #AP18441c) western blot analysis in 293 cell line lysates (35ug/lane). This demonstrates the EXD3 Antibody detected the EXD3 protein (arrow).

Please note: All products are 'FOR RESEARCH USE ONLY. NOT FOR USE IN DIAGNOSTIC OR THERAPEUTIC PROCEDURES'.