

# GAGE3 Antibody (N-term)

Affinity Purified Rabbit Polyclonal Antibody (Pab)

Catalog # AP18450a

## Product Information

---

Application	WB, E
Primary Accession	<a href="#">Q13067</a>
Reactivity	Human
Host	Rabbit
Clonality	Polyclonal
Isotype	Rabbit IgG
Clone Names	RB38781
Antigen Region	1-30

## Additional Information

---

Other Names	G antigen 3, GAGE-3, Cancer/testis antigen 43, CT43, GAGE3
Target/Specificity	This GAGE3 antibody is generated from rabbits immunized with a KLH conjugated synthetic peptide between 1-30 amino acids from the N-terminal region of human GAGE3.
Dilution	WB~~1:1000 E~~Use at an assay dependent concentration.
Format	Purified polyclonal antibody supplied in PBS with 0.09% (W/V) sodium azide. This antibody is purified through a protein A column, followed by peptide affinity purification.
Storage	Maintain refrigerated at 2-8°C for up to 2 weeks. For long term storage store at -20°C in small aliquots to prevent freeze-thaw cycles.
Precautions	GAGE3 Antibody (N-term) is for research use only and not for use in diagnostic or therapeutic procedures.

## Protein Information

---

### Background

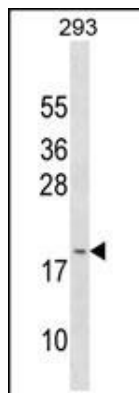
---

The function of this protein remains unknown.

### Images

---

GAGE3 Antibody (N-term) (Cat. #AP18450a) western blot analysis in 293 cell line lysates (35ug/lane).This



demonstrates the GAGE3 Antibody detected the GAGE3 protein (arrow).

Please note: All products are 'FOR RESEARCH USE ONLY. NOT FOR USE IN DIAGNOSTIC OR THERAPEUTIC PROCEDURES'.