

GRWD1 Antibody (Center)

Affinity Purified Rabbit Polyclonal Antibody (Pab)

Catalog # AP18456c

Product Information

Application	WB, E
Primary Accession	Q9BQ67
Other Accession	NP_113673.3
Reactivity	Human
Host	Rabbit
Clonality	Polyclonal
Isotype	Rabbit IgG
Clone Names	RB38805
Calculated MW	49419
Antigen Region	183-209

Additional Information

Gene ID	83743
Other Names	Glutamate-rich WD repeat-containing protein 1, GRWD1, GRWD, KIAA1942, WDR28
Target/Specificity	This GRWD1 antibody is generated from rabbits immunized with a KLH conjugated synthetic peptide between 183-209 amino acids from the Central region of human GRWD1.
Dilution	WB~~1:1000 E~~Use at an assay dependent concentration.
Format	Purified polyclonal antibody supplied in PBS with 0.09% (W/V) sodium azide. This antibody is purified through a protein A column, followed by peptide affinity purification.
Storage	Maintain refrigerated at 2-8°C for up to 2 weeks. For long term storage store at -20°C in small aliquots to prevent freeze-thaw cycles.
Precautions	GRWD1 Antibody (Center) is for research use only and not for use in diagnostic or therapeutic procedures.

Protein Information

Name	GRWD1
Synonyms	GRWD, KIAA1942, WDR28
Function	Histone binding-protein that regulates chromatin dynamics and

minichromosome maintenance (MCM) loading at replication origins, possibly by promoting chromatin openness (PubMed:[25990725](#)).

Cellular Location

Nucleus, nucleolus. Nucleus. Chromosome. Note=Present in the nucleus throughout interphase and is detached from chromatin at the onset of mitosis and rebinds at telophase when the pre-replication complexes (pre-RC) is formed (PubMed:25990725).

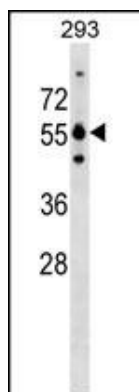
Background

GRWD1 is a component of the 50S and 80S preribosomal complexes and plays a role in ribosome biogenesis (Gratenstein et al., 2005 [PubMed 15885502]).

References

Higa, L.A., et al. Nat. Cell Biol. 8(11):1277-1283(2006)
Gratenstein, K., et al. Genomics 85(6):762-773(2005)
Trzcinska, A.M., et al. Mol. Biol. Rep. 29(4):347-352(2002)

Images



GRWD1 Antibody (Center) (Cat. #AP18456c) western blot analysis in 293 cell line lysates (35ug/lane). This demonstrates the GRWD1 Antibody detected the GRWD1 protein (arrow).

Please note: All products are 'FOR RESEARCH USE ONLY. NOT FOR USE IN DIAGNOSTIC OR THERAPEUTIC PROCEDURES'.